

WAAS CH 49117 W04A	APP CRS 043°	Rwy Idg TDZE Apt Elev	5499 609 609
--	------------------------	-----------------------------	---

RNAV (GPS) RWY 4R

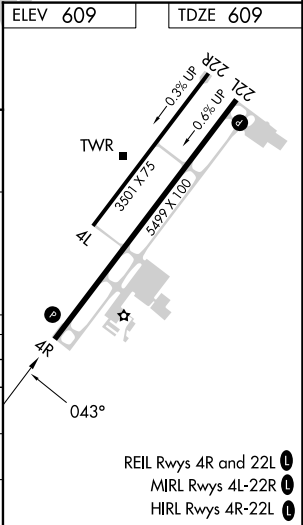
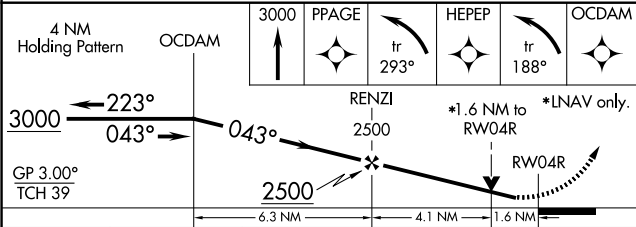
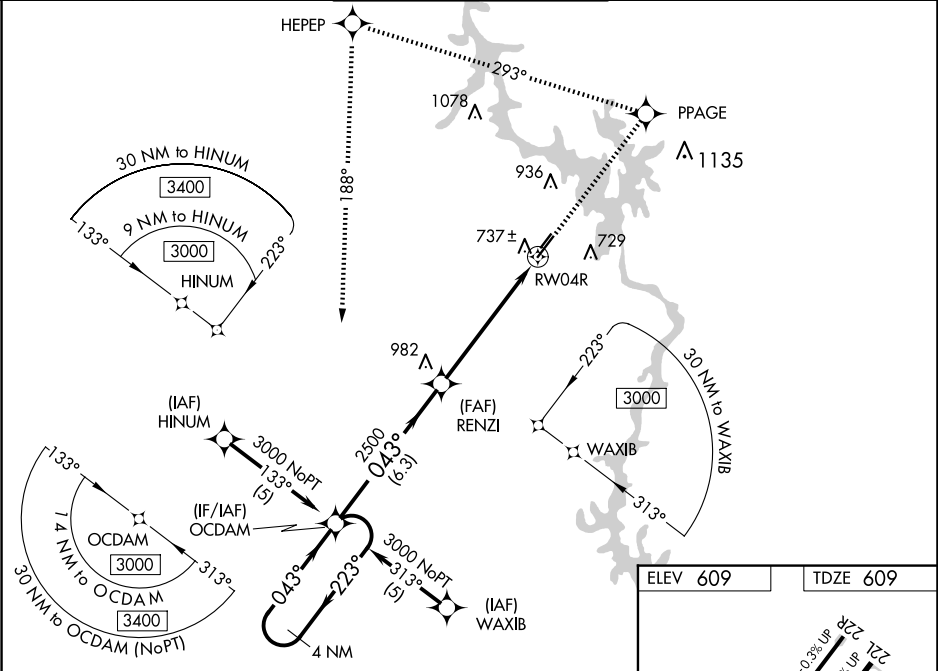
STANLY COUNTY (VUJ)

PAR

Circling to Rwy 4L/22R NA at night. For uncompensated Baro-VNAV systems, LNAV/VNAV NA below -16°C (4°F) or above 47°C (116°F). DME/DME RNP-0.3 NA. Visibility reduction by helicopters NA. When local altimeter setting not received, use Asheboro altimeter setting and increase LPV DA to 929, LNAV/VNAV DA to 1083, and all MDA 60 feet; increase LPV all Cats, LNAV/VNAV all Cats, LNAV Cats C and D, and Circling Cats C and D visibility ¼ mile. Baro-VNAV NA when using Asheboro altimeter setting. VDP NA with Asheboro altimeter setting.

MISSED APPROACH: Climb to 3000 direct PPAGE and left turn on track 293° to HEPEP and left turn on track 188° to OCDAM and hold.

AWOS-3 128.175	CHARLOTTE APP CON 128.325 307.8	STANLY COUNTY TOWER★ 126.275 (CTAF) 291.9	GND CON 121.75 254.375	CLNC DEL 121.75 254.375
--------------------------	---	---	----------------------------------	-----------------------------------



CATEGORY	A	B	C	D
LPV DA	876-1	267 (300-1)		
LNAV/VNAV DA	1030-1½	421 (500-1½)		
LNAV MDA	1160-1 551 (600-1)	1160-1½ 551 (600-1½)	1160-1¾ 551 (600-1¾)	1160-1¾ 551 (600-1¾)
CIRCLING	1260-1 651 (700-1)	1260-1¾ 651 (700-1¾)	1380-2½ 771 (800-2½)	