

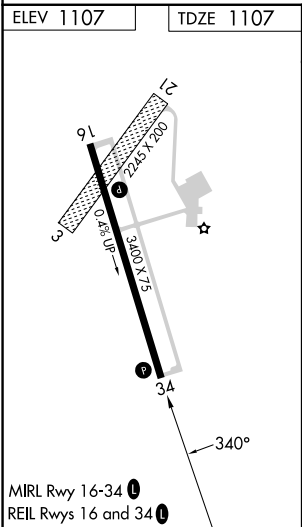
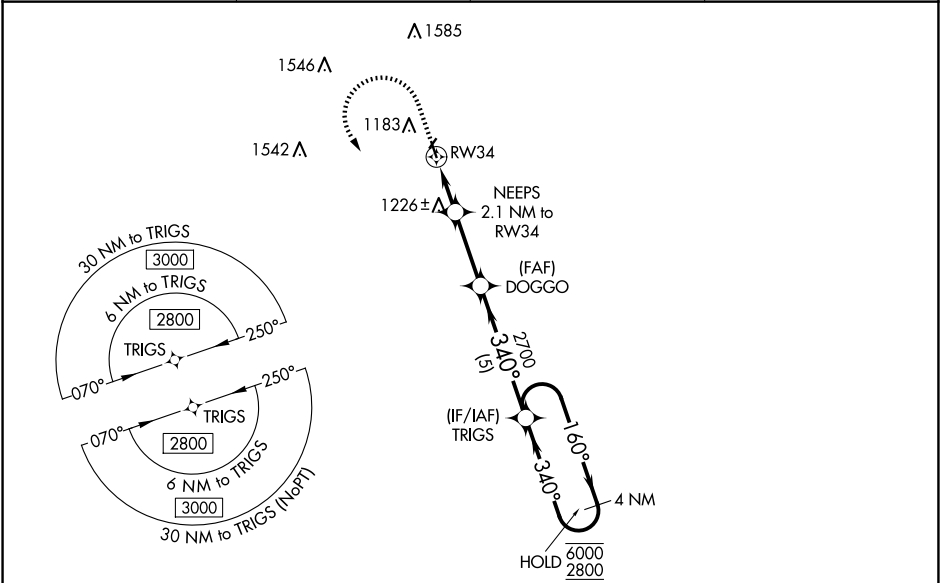
WAAS CH <b>70339</b> <b>W34A</b>	APP CRS <b>340°</b>	Rwy Idg TDZE <b>1107</b> Apt Elev <b>1107</b>
--	------------------------	---

RNAV (GPS) RWY 34

BLUE EARTH MUNI (SBU)

RNP APCH - GPS.	
<div><div>NA</div><div>Baro-VNAV NA. Rwy 34 helicopter visibility reduction below 1 SM NA. Circling NA to Rwy's 3 and 21. Use FRM altimeter setting; when not received, use FXY altimeter setting and increase LPV DA to 1443 feet and all visibilities 1⁄8 SM. Increase LNAV/VNAV DA to 1593 feet; increase all MDAs 60 feet and visibility Cat C 1⁄4 SM.</div></div>	MISSED APPROACH: Climb to 1600 then climbing left turn to 2800 direct TRIGS and hold.

FRM AWOS-3PT <b>120.025</b>	MINNEAPOLIS CENTER <b>127.75 257.7</b>	GCO <b>121.725</b>	UNICOM <b>122.8 (CTAF) 0</b>
--------------------------------	---	-----------------------	---------------------------------



1771 A				
<div><div>1600</div><div>2800</div><div>TRIGS</div></div>				
<div><div>RW34</div><div>NEEPS 2.1 NM to RW34</div><div>DOGGO</div><div>TRIGS</div><div>4 NM Holding Pattern</div><div>160°</div><div>340°</div><div>6000</div><div>2800</div><div>GP 3.00°</div><div>TCH 35</div></div>				
CATEGORY	A	B	C	D
LPV DA	1398-1 291 (300-1)			NA
LNAV/VNAV DA	1548-1 <sup>3⁄8</sup> 441 (500-1 <sup>3⁄8</sup> )			NA
LNAV MDA	1520-1 413 (500-1)	1520-1 <sup>1⁄8</sup> 413 (500-1 <sup>1⁄8</sup> )		NA
CIRCLING	1560-1 453 (500-1)	1580-1 473 (500-1)	1720-1 <sup>3⁄4</sup> 613 (700-1 <sup>3⁄4</sup> )	NA