

WAAS CH <b>62917</b> <b>W27A</b>	APP CRS <b>272°</b>	Rwy Ldg TDZE <b>839</b> Apt Elev <b>842</b>
--	------------------------	---

RNAV (GPS) RWY 27

VINTON VETERANS MEML AIRPARK (VTI)

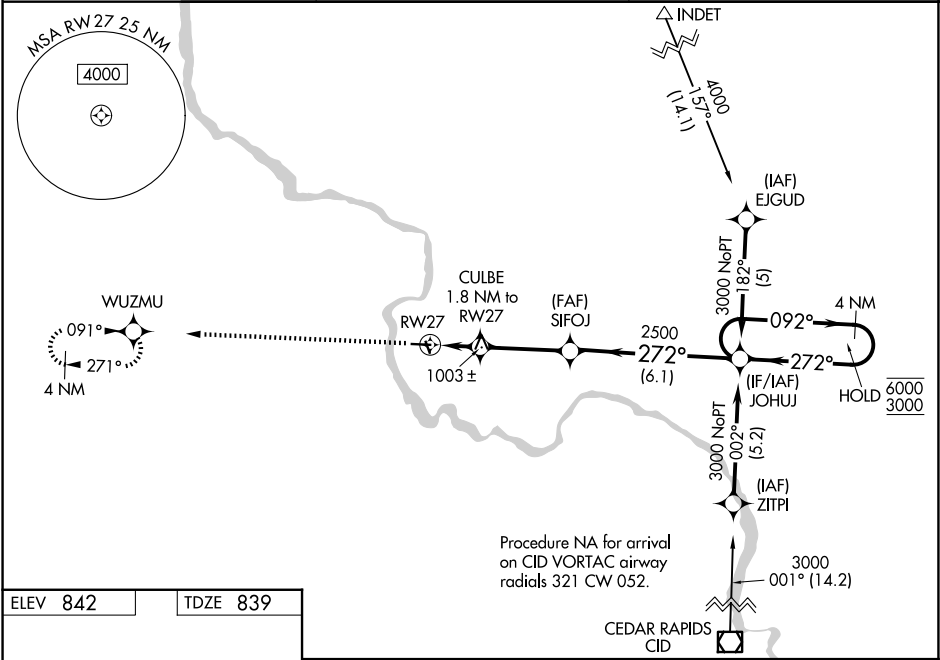
RNP APCH - GPS.

⚠

For uncompensated Baro-VNAV systems, LNAV/VNAV NA below -1.6°C or above 54°C. Rwy 27 helicopter visibility reduction below ¾ SM NA. Baro-VNAV and VDP NA when using IIB altimeter setting. When local altimeter setting not received, use IIB altimeter setting: increase LPV DA to 1140 feet, LNAV/VNAV DA to 1374 feet and all visibilities ½ SM; increase all MDAs 60 feet.

MISSED APPROACH: Climb to 3000 direct WUZMU and hold.

AWOS-3 <b>120.075</b>	CEDAR RAPIDS APP CON ★ <b>134.05 266.8</b>	UNICOM <b>122.8 (CTAF) ①</b>
--------------------------	---	---------------------------------



3000

WUZMU

VGSI and RNAV glidepath not coincident (VGSI Angle 3.00/TCH 32).

JOHUJ

4 NM Holding Pattern

092° 6000

272° 3000

GP 3.04° TCH 40

CULBE 1.8 NM to RW27

SIFOJ 2500

272°

1440

1.2 NM to RW27

0.6

3.2 NM

6.1 NM

CATEGORY	A	B	C	D
LPV DA	1089-1	250 (300-1)		NA
LNAV/VNAV DA	1260-1¼	421 (500-1¼)		NA
LNAV MDA	1260-1	421 (500-1)		NA
CIRCLING	1320-1 478 (500-1)	1360-1 518 (600-1)		NA

REIL Rwy 9 and 27 ①  
MIRL Rwy 9-27 ①