

WAAS

CH **93907**

W36A

APP CRS

358°

Rwy Idg

5005

TDZE

779

Apt Elev

779

RNAV (GPS) RWY 36

MARSHALL MEML MUNI (MHL)

RNP APCH.

▼

Circling NA to Rwys 9 and 27.
For uncompensated Baro-VNAV systems, LNAV/VNAV NA below -16°C or above 54°C.

MISSED APPROACH:

Climb to 3000 direct
GOXJY and hold.

AWOS-3PT

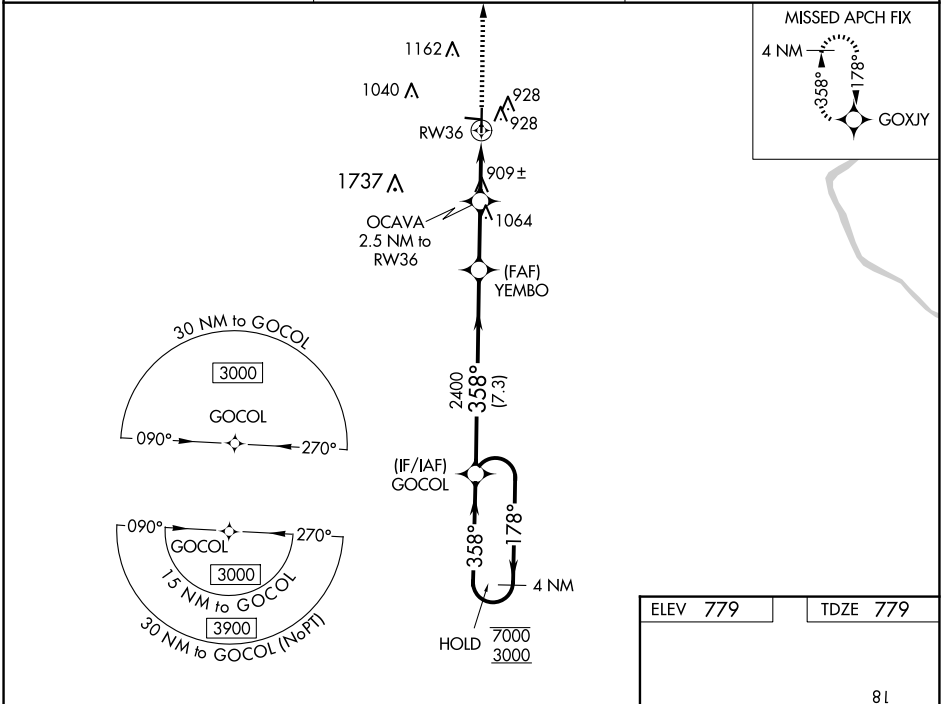
118.675

WHITEMAN APP CON ★

127.45

UNICOM

122.8 (CTAF) 0



4 NM Holding Pattern		VGSI and RNAV glidepath not coincident (VGSI Angle 3.04/TCH 36).		3000	GOXJY
7000 ← 178°		3000 → 358°		2400	2400
GP 3.00°		TCH 40		2400	2400
7.3 NM		2.5 NM		1.4	1.1
CATEGORY	A	B	C	D	
LPV DA	1029-1	250 (300-1)		NA	
LNAV/VNAV DA	1091-1	312 (400-1)		NA	
LNAV MDA	1160-1	381 (400-1)	1160-1 381 (400-1 1/8)	NA	
CIRCLING	1260-1	481 (500-1)	1480-2 701 (800-2)	NA	

REIL Rwy 36 0

MIRL Rwy 18-36 0

NC-3, 07 AUG 2025 to 04 SEP 2025

NC-3, 07 AUG 2025 to 04 SEP 2025