

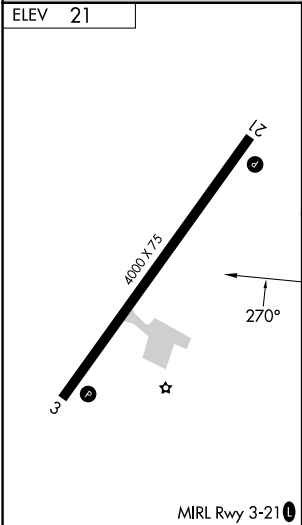
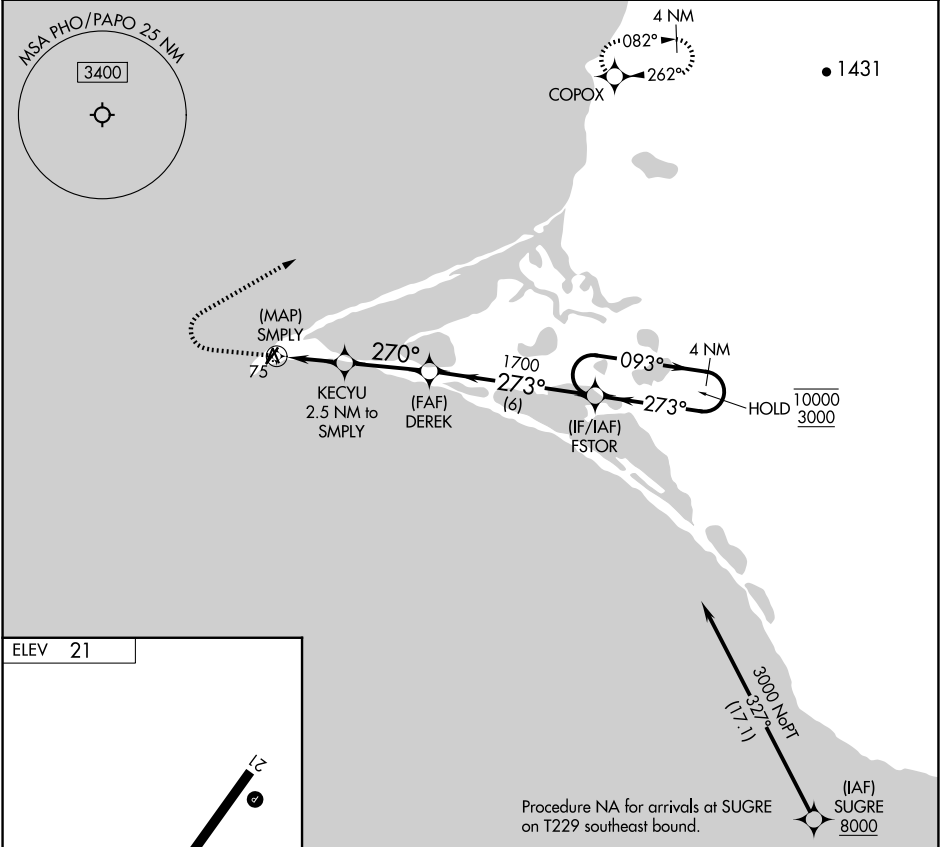
APP CRS	Rwy Idg	N/A
270°	TDZE	N/A
	Apt Elev	21

RNAV (GPS)-A

POINT HOPE (PHO) (PAPO)

RNP APCH - GPS.	MISSED APPROACH: Climb to 500 then climbing right turn to 3300 direct COPOX and hold.
When local altimeter setting not received, use LUR/PALU altimeter setting and increase all MDAs 100 feet. Rwy 3 and 21 helicopter visibility reduction below ¾ SM NA.	

AWOS-3P 118.325	ANCHORAGE CENTER 119.65 363.25	KOTZEBUE RADIO 122.25	CTAF 122.8 0
--------------------	-----------------------------------	--------------------------	-----------------



500	3300	COPOX				
		DEREK	FSTOR	4 NM Holding Pattern		
		KECYU 2.5 NM to SMPLY	093° 273°	10000 3000		
		SMPLY	270° 1700			
		980	6 NM			
		2.5 NM	3.1 NM			
CATEGORY	A	B	C	D		
CIRCLING	380-1 359 (400-1)	480-1 459 (500-1)	480-1½ 459 (500-1½)	580-2 559 (600-2)		