

APP CRS	Rwy Idg	4864
172°	TDZE	1364
	Apt Elev	1364

RNAV (GPS) RWY 17

LLOYD STEARMAN FLD (1K1)

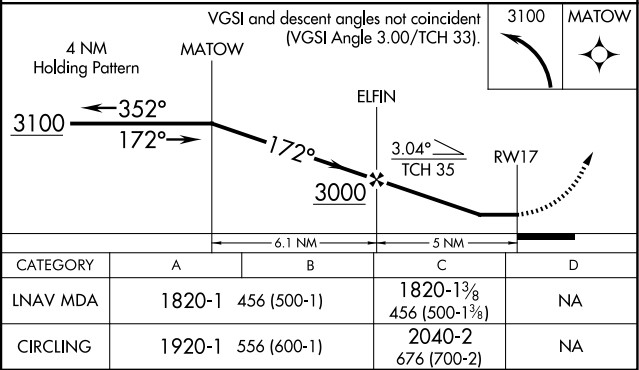
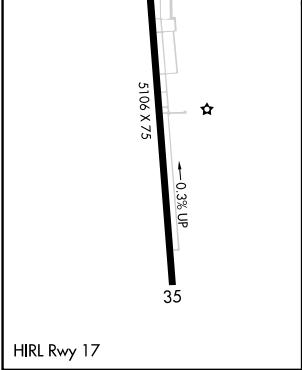
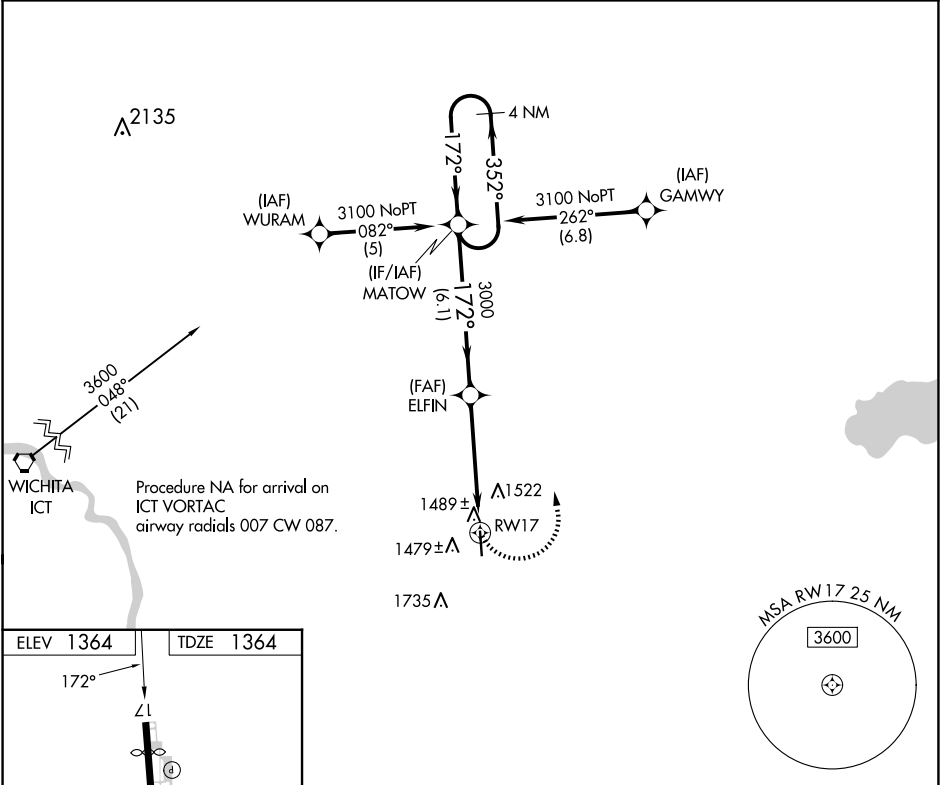
▼

NA

DME/DME RNP-0.3 NA. When local altimeter setting not received, use Wichita Dwight D Eisenhower Nil altimeter setting and increase Circling Cat C MDA 60 feet. Straight-in Rwy 17 NA at night, Circling Rwy 17 NA at night. Rwy 17 helicopter visibility reduction below 1 SM NA.

MISSED APPROACH: Climbing left turn to 3100 direct MATOW and hold.

AWOS-2 118.3	WICHITA APP CON 134.8 269.1	CLNC DEL 125.0	UNICOM 123.075 (CTAF) 0
-----------------	--------------------------------	-------------------	----------------------------



NC-2, 07 AUG 2025 to 04 SEP 2025

NC-2, 07 AUG 2025 to 04 SEP 2025