

WAAS CH 69500 W34A	APP CRS 341°	Rwy Idg TDZE 3035 Apt Elev 3045
--	------------------------	---

RNAV (GPS) RWY 34

OAKLEY MUNI (OEL)

RNP APCH - GPS.

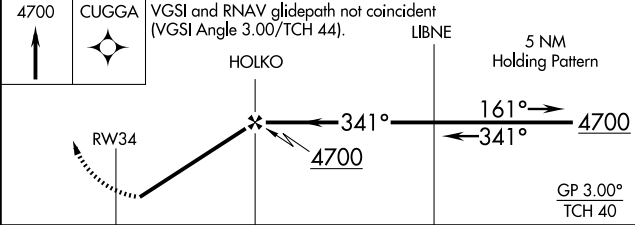
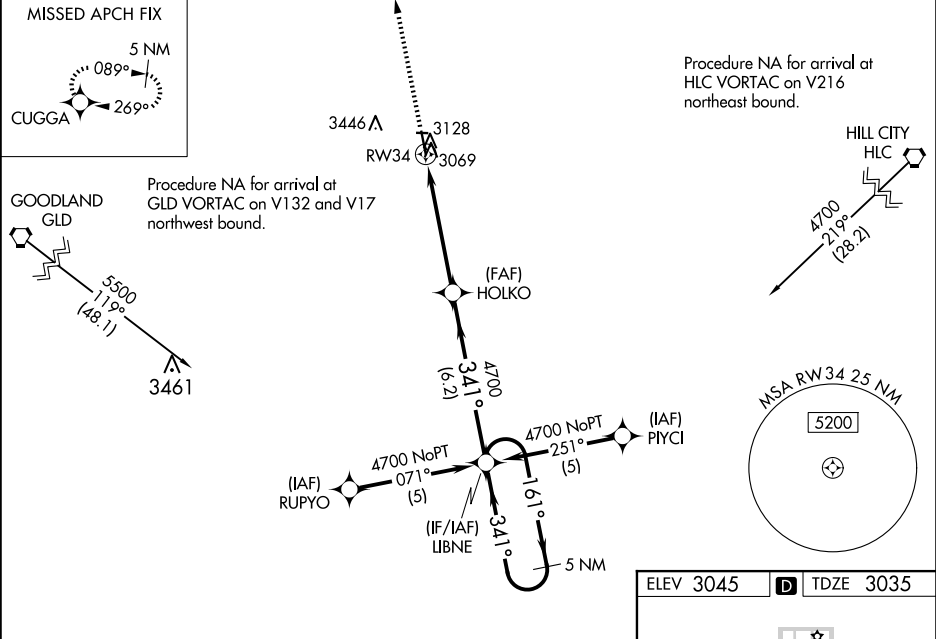
▼

⚠

When local altimeter setting not received, use Renner Fld/Goodland Muni altimeter setting: increase LPV DA to 3471 feet and LNAV/VNAV DA to 3658 feet; increase all MDA 200 feet and visibility LNAV Cat C $\frac{3}{8}$ SM and Circling Cat C $\frac{3}{4}$ SM.
For uncompensated Baro-VNAV systems, LNAV/VNAV NA below -21°C or above 42°C. Baro-VNAV NA when using Renner Fld/Goodland Muni altimeter setting.
Circling NA to Rwys 8 and 26. Circling Rwy 16 NA at night.

MISSED APPROACH: Climb to 4700 direct CUGGA and hold.

AWOS-3 118.325	DENVER CENTER 132.7 226.675	UNICOM 122.8 (CTAF)
--------------------------	---------------------------------------	-------------------------------



CATEGORY	A	B	C	D
LPV DA	3285-1	250 (300-1)		NA
LNAV/VNAV DA	3472-1½	437 (500-1½)		NA
LNAV MDA	3380-1	345 (400-1)		NA
CIRCLING	3480-1½ 435 (500-1½)	3800-1½ 755 (800-1½)	3800-2¼ 755 (800-2¼)	NA

