

APP CRS  
**041°**

Rwy Idg  
TDZE  
**3622**

Apt Elev  
**3622**

RNAV (GPS) RWY 4  
ELKHART-MORTON COUNTY (EHA)

RNP APCH-GPS.

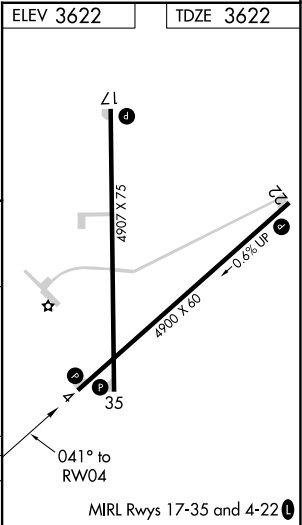
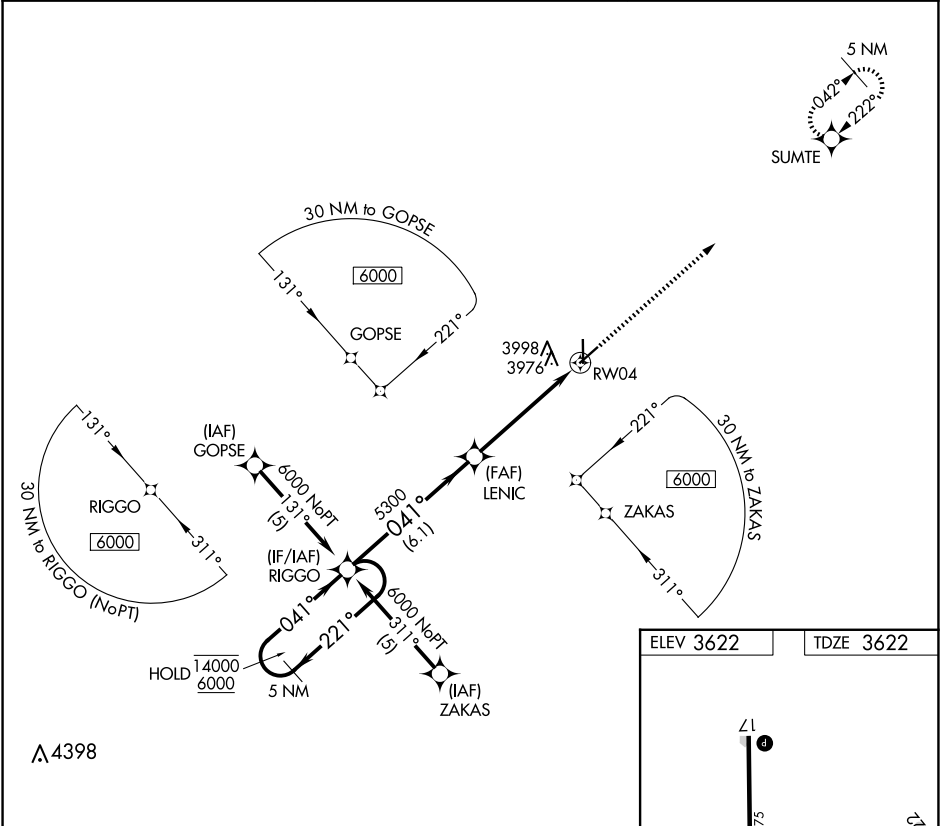
▼

▲

Rwy 4 helicopter visibility reduction below ¾ SM NA.

MISSED APPROACH: Climb to 6000 direct SUMTE and hold.

AWOS-3P <b>118.025</b>	KANSAS CITY CENTER <b>134.0 257.625</b>	UNICOM <b>122.8 (CTAF) 0</b>
---------------------------	--	---------------------------------



CATEGORY	A	B	C	D
LNAV MDA	4340-1	718 (800-1)	4340-2	NA
			718 (800-2)	

NC-2, 07 AUG 2025 to 04 SEP 2025

NC-2, 07 AUG 2025 to 04 SEP 2025