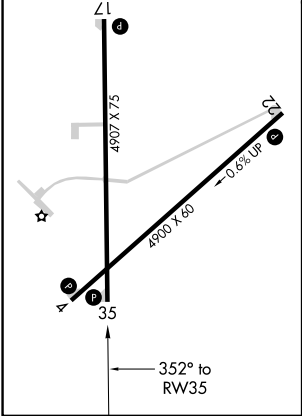
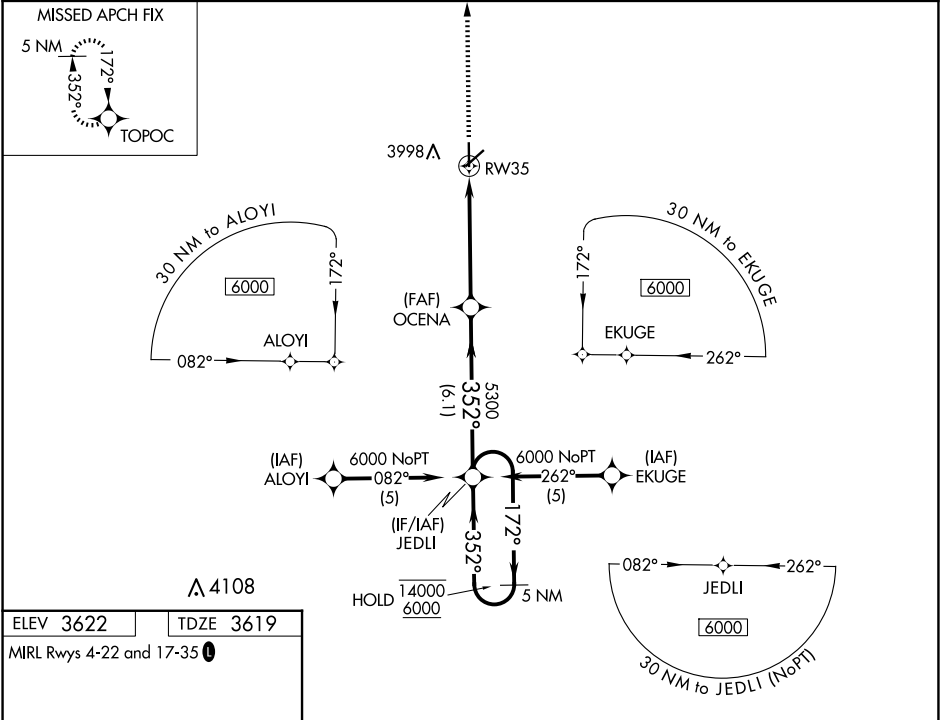


WAAS CH <b>50417</b> <b>W35A</b>	APP CRS <b>352°</b>	Rwy Idg TDZE <b>3619</b> Apt Elev <b>3622</b>
--	------------------------	---

RNAV (GPS) RWY 35  
ELKHART-MORTON COUNTY (EHA)

RNP APCH-GPS. ▼ Rwy 35 helicopter visibility reduction below ¾ SM NA. ▲ For uncompensated Baro-VNAV systems, LNAV/VNAV NA below -22°C or above 54°C.	MISSED APPROACH: Climb to 6000 direct TOPOC and hold.
--	---

AWOS-3P <b>118.025</b>	KANSAS CITY CENTER <b>134.0 257.625</b>	UNICOM <b>122.8 (CTAF) 0</b>
---------------------------	--	---------------------------------



6000 ↑	TOPOC 				
CATEGORY	A	B	C	D	
LPV DA	3869-1 250 (300-1)			NA	
LNAV/VNAV DA	4167-1½ 548 (600-1½)			NA	
LNAV MDA	4280-1 661 (700-1)		4280-1⅞ 661 (700-1⅞)		NA