

BRITTON, SOUTH DAKOTA

AL-6679 (FAA)

22363

APP CRS 311°	Rwy Idg 4210 TDZE 1318 Apt Elev 1318
------------------------	---

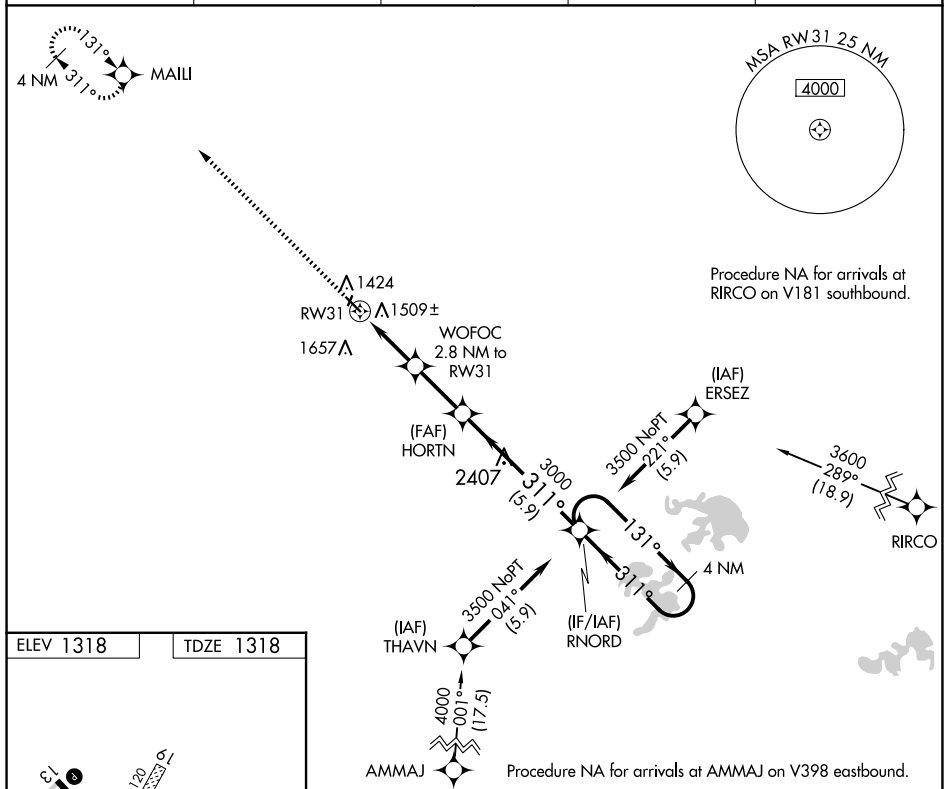
RNAV (GPS) RWY 31
BRITTON MUNI (BTN)

RNP APCH-GPS.

T When local altimeter setting not received, use Aberdeen altimeter setting and increase all MDAs 100 feet. Circling NA to Rwy 1 and 19. Rwy 13 helicopter visibility reduction below $\frac{3}{4}$ SM NA.

MISSED APPROACH: Climb to 3000 direct
MAIL and hold.

AWOS-3P 118.275	ABR ASOS 125.875	MINNEAPOLIS CENTER 120.6 371.9	GCO 121.725	AUNICOM 122.8 (CTAF) 0
---------------------------	----------------------------	--	-----------------------	----------------------------------



ELEV 1318

TDZE 1318

1366

203 X 120

4210 X 75

136.6°

311°

REIL Rwy 13 and 31

MIRL Rwy 13-31

CATEGORY	A	B	C	D
LNAV MDA	1860-1	542 (600-1)	NA	
CIRCLING	2000-1 682 (700-1)	2020-1 702 (800-1)	NA	

BRITTON, SOUTH DAKOTA

Amdt 1C 08SEP22

45°49'N-97°45'W

BRITTON MUNI (BTN)
RNAV (GPS) RWY 31

NC-1, 07 AUG 2025 to 04 SEP 2025

NC-1, 07 AUG 2025 to 04 SEP 2025