

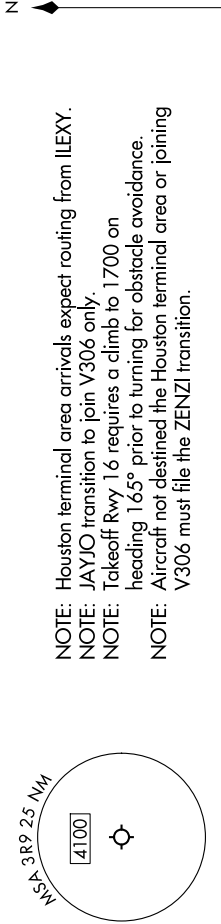
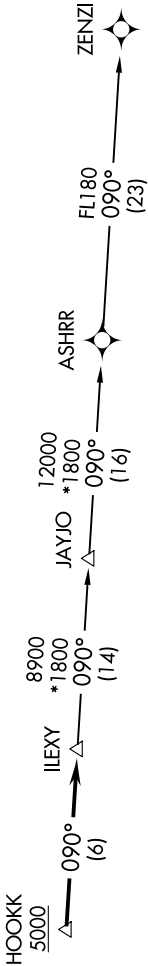
UNICOM (CTAF)
123.0
AUSTIN DEP CON
119.0 370.85

RNAV 1 - DME/DME/IRU or GPS.
RADAR required.

(ILEXY4.ILEXY) 23166
ILEXY FOUR DEPARTURE (RNAV)

AL-6677 (FAA)

LAKEWAY AIRPARK (3R9)
LAKEWAY, TEXAS



TAKEOFF MINIMUMS:
Rwy 16: 500-2³/₄ or Standard with minimum climb of 265' per NM to 1500.
Rwy 34: Standard.

NOTE: Houston terminal area arrivals expect routing from ILEXY.
NOTE: JAYJO transition to join V306 only.
NOTE: Takeoff Rwy 16 requires a climb to 1700 on heading 165° prior to turning for obstacle avoidance.
NOTE: Aircraft not destined the Houston terminal area or joining V306 must file the ZENZI transition.

NOTE: Chart not to scale.

DEPARTURE ROUTE DESCRIPTION

TAKEOFF RUNWAY 16: Climb on heading 165° to 1700, then as assigned by ATC for vectors to cross HOOKK at or above 5000, thence. . . .

TAKEOFF RUNWAY 34: Climb on heading 345° or as assigned by ATC for vectors to cross HOOKK at or above 5000, thence. . . .
... on track 090° to ILEXY, then on transition. Maintain altitude assigned by ATC. Expect filed altitude 10 minutes after departure.

JAYJO TRANSITION (ILEXY4.JAYJO)
ZENZI TRANSITION (ILEXY4.ZENZI)

ILEXY FOUR DEPARTURE (RNAV)
(ILEXY4.ILEXY) 15JUN23

LAKEWAY, TEXAS
LAKEWAY AIRPARK (3R9)