

WAAS  
CH **50302**  
**W30A**

APP CRS  
**302°**

Rwy Idg  
TDZE **54**  
Apt Elev **66**

**RNAV (GPS) RWY 30**

HALF MOON BAY (HAF')

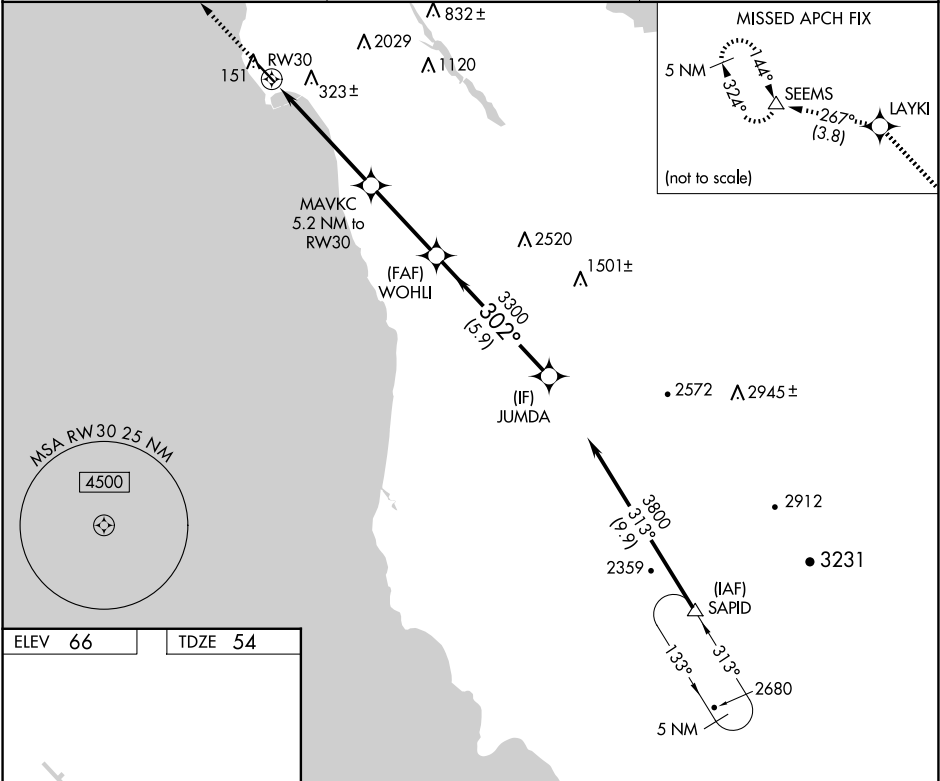
RNP APCH.

MISSED APPROACH: Climb to 4000 direct LAYKI and on track 267° to SEEMS and hold, continue climb-in-hold to 4000.

AWOS-3  
**127.275**

NORCAL APP CON  
**135.1 307.2**

UNICOM  
**122.8 (CTAF) 1**



ELEV 66

TDZE 54

REIL Rwy 30 1

MIRL Rwy 12-30 1

4000	LAYKI	tr 267°	SEEMS	VGSi and RNAV glidepath not coincident (VGSi Angle 3.00/TCH 24).	
*LNAV only		MAVKC 5.2 NM to RW30		JUMDA	
RW30		3300		3800	
1.8 NM		3.4 NM		3.4 NM	
3.4 NM		5.9 NM		GP 3.50° TCH 40	
CATEGORY	A		B	C	D
LPV	DA		381-1 327 (400-1)		
LNAV MDA	620-1 566 (600-1)		620-1½ 566 (600-1½)		