

CTAF
122.7
HOUSTON DEP CON
134.45 284.0

TOP ALTITUDE:
ASSIGNED BY ATC

NOTE: RADAR required.
NOTE: DME/DME/IRU or GPS required.
NOTE: RNAV 1.

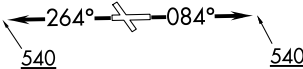
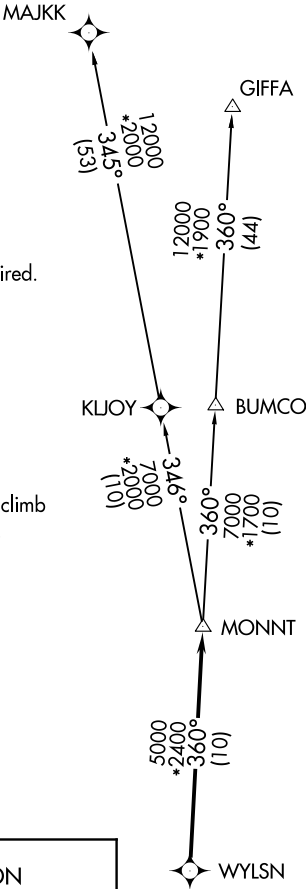
TAKEOFF MINIMUMS

Rwy 8, 26: Standard with minimum climb
of 500' per NM to 540.
Rwy 14, 32: NA - Environmental.

DEPARTURE ROUTE DESCRIPTION

TAKEOFF RUNWAY 8: Climb on heading
084° to 540 for RADAR vectors to WYLSN,
thence. . . .
TAKEOFF RUNWAY 26: Climb on heading
264° to 540 for RADAR vectors to WYLSN,
thence. . . .
...on track 360° to MONNT, then on
(transition). Maintain ATC assigned altitude.
Expect filed altitude 10 minutes after departure.

GIFFA TRANSITION (WYLSN8.GIFFA)
MAJKK TRANSITION (WYLSN8.MAJKK)



NOTE: Chart not to scale.