

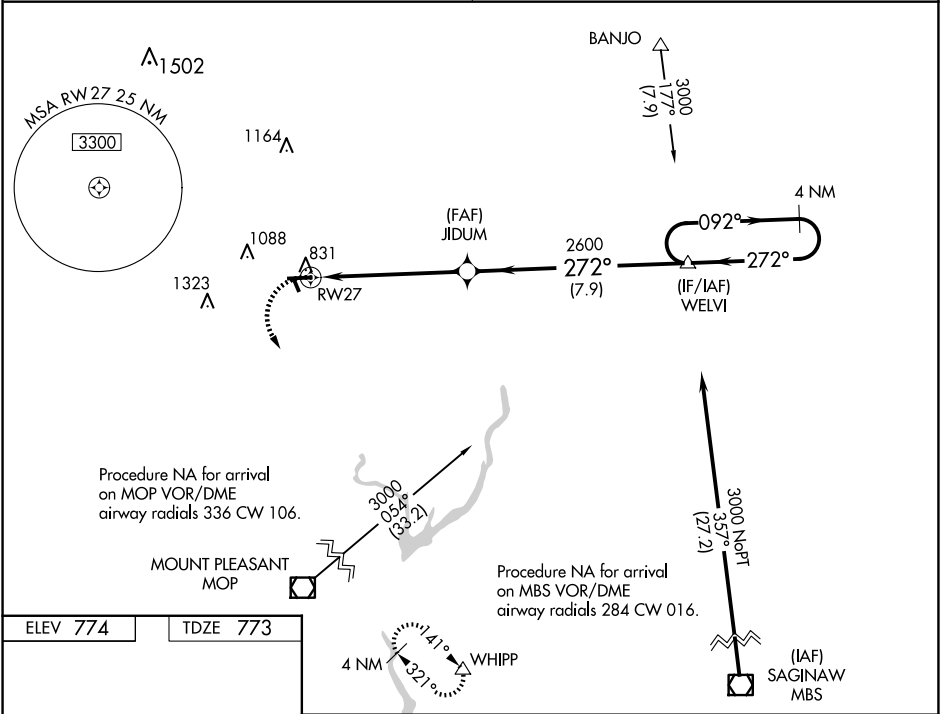
WAAS CH 99326 W27A	APP CRS 272°	Rwy ldg TDZE 773 Apt Elev 774
--	------------------------	---

RNAV (GPS) RWY 27

GLADWIN ZETTEL MEML (GDW)

RNP APCH - GPS.		MISSED APPROACH: Climbing left turn to 2600 direct WHIPP and hold.
Circling NA to Rwy 15 and 33. Rwy 27 helicopter visibility reduction below 1 SM NA. Procedure NA at night. Use Mount Pleasant altimeter setting; when not received, use Midland altimeter setting and increase all MDA 20 feet; increase LP and LNAV Cats C/D visibility 1/8 SM.		

GREAT LAKES APP CON ★ 126.45 235.625	UNICOM 122.8 (CTAF) 0
--	---------------------------------



ELEV 774		TDZE 773	
MOUNT PLEASANT MOP		SAGINAW MBS	
Procedure NA for arrival on MOP VOR/DME airway radials 336 CW 106.		Procedure NA for arrival on MBS VOR/DME airway radials 284 CW 016.	
MIRL Rwy 9-27 0		REIL Rwy 9 and 27 0	
GLADWIN, MICHIGAN		GLADWIN ZETTEL MEML (GDW)	
Orig-D 20APR23		43°58'N - 84°29'W	
RNAV (GPS) RWY 27		RNAV (GPS) RWY 27	