

WAAS
CH **53423**
W35A

APP CRS
352°

Rwy Idg
TDZE
Apt Elev
3600
3017
3018

RNAV (GPS) RWY 35

CROSBYTON MUNI (8F°3)

RNP APCH.

▼

▲ NA

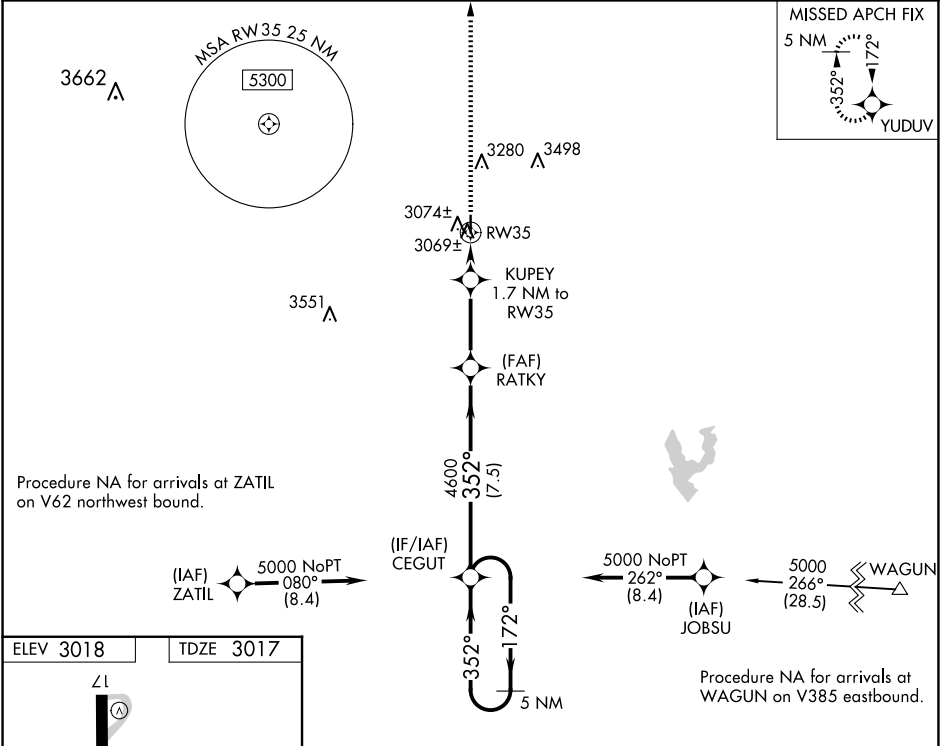
Use Lubbock altimeter setting. Procedure NA at night.
Rwy 35 helicopter visibility reduction below 1 SM NA.

MISSED APPROACH: Climb to 5000 direct YUDUV and hold.

LBB ASOS
125.3

LUBBOCK APP CON
119.2 351.8

UNICOM
122.8 (CTAF) 0



ELEV 3018

TDZE 3017

3600 X 60

35

352°

MIRL Rwy17-35 0

5000

YUDUV

VGSI and descent angles not coincident (VGSI Angle 4.00/TCH 23).

5 NM Holding Pattern

CEGUT

172° 352° 5000

3580 4600

3.00° TCH 40

1.7 NM 3.2 NM 7.5 NM

RW35

KUPEY 1.7 NM to RW35

RATKY

CATEGORY	A	B	C	D
LP MDA	3440-1	423 (500-1)	3440-1¼ 423 (500-1¼)	NA
LNAV MDA	3440-1	423 (500-1)	3440-1¼ 423 (500-1¼)	NA
CIRCLING	3500-1 482 (500-1)	3740-1 722 (800-1)	3920-2¾ 902 (1000-2¾)	NA