

WAAS CH 82722 W17A	APP CRS 172°	Rwy Idg 3600 TDZE 3018 Apt Elev 3018
--	------------------------	---

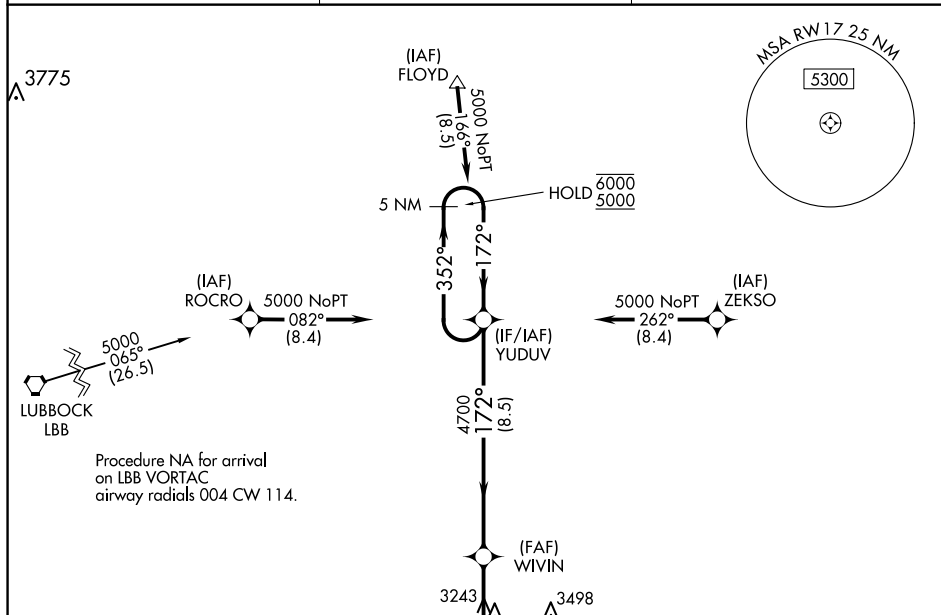
RNAV (GPS) RWY 17
CROSBYTON MUNI (8F3)

RNP APCH.

T	Procedure NA at night.
A_{NA}	Rwy 17 helicopter visibility reduction below 1 SM NA. Use Lubbock altimeter setting.

MISSED APPROACH: Climb to 5000 direct CEGUT and hold.

LBB ASOS 125.3	LUBBOCK APP CON 119.2 351.8	UNICOM 122.8 (CTAF) 0
--------------------------	---------------------------------------	--



ELEV 3018		TDZE 3018
-----------	--	-----------

