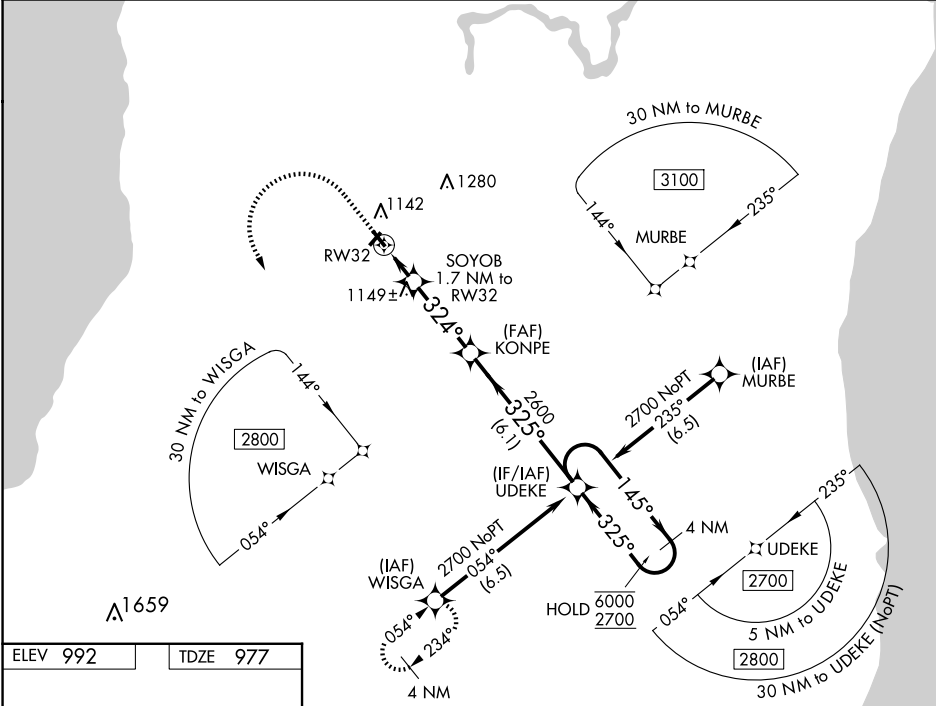


WAAS CH 58225 W32A	APP CRS 324°	Rwy Idg TDZE Apt Elev	3600 977 992
--	------------------------	-----------------------------	---

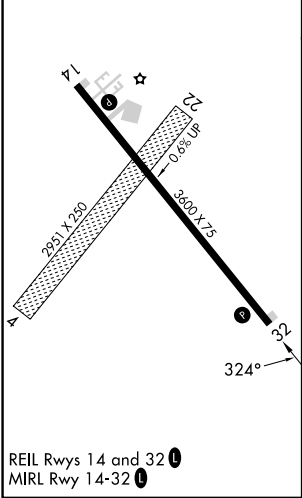
RNAV (GPS) RWY 32
NEW HOLSTEIN MUNI (8D1)

RNP APCH.	<p>⚠ Circling NA to Rws 4 and 22. Rwy 32 helicopter visibility reduction below 1 SM NA. Baro-VNAV NA. Use Oshkosh altimeter setting, when not received use Appleton altimeter setting. Straight-in Rwy 32 NA at night, Circling Rwy 32 NA at night.</p>	<p>MISSED APPROACH: Climb to 1500 then climbing left turn to 3000 direct WISGA and hold.</p>
-----------	---	--

OSH ASOS 125.9	MILWAUKEE APP CON 127.0 263.075	UNICOM 123.0 (CTAF)
--------------------------	---	-------------------------------



ELEV 992	TDZE 977
----------	----------



1500	3000	WISGA	VGSI and RNAV glidepath not coincident (VGSI Angle 3.00/TCH 23).	4 NM Holding Pattern
↑	↶	✧		
* LNAV only.	SOYOB 1.7 NM to RW32	KONPE 2600	UDEKE 2700	
	1.7 NM	3.3 NM	6.1 NM	
CATEGORY	A	B	C	D
LPV DA	1376-1 $\frac{1}{8}$	399 (400-1 $\frac{1}{8}$)	NA	NA
LNAV/VNAV DA	1509-1 $\frac{1}{8}$	532 (600-1 $\frac{1}{8}$)	NA	NA
LNAV MDA	1480-1	503 (500-1)	NA	NA
CIRCLING	1540-1	548 (600-1)	NA	NA