

WAAS

CH **99625**

**W14A**

APP CRS

**144°**

Rwy Idg

**3600**

TDZE

**977**

Apt Elev

**992**

**RNAV (GPS) RWY 14**

NEW HOLSTEIN MUNI (8D1)

RNP APCH.

NA

Rwy 14 helicopter visibility reduction below  $\frac{3}{4}$  SM NA. Baro-VNAV NA.  
Use Oshkosh altimeter setting, when not received use Appleton altimeter setting.

MISSED APPROACH: Climb to 1500 then climbing right turn to 3000 direct WISGA and hold.

OSH ASOS

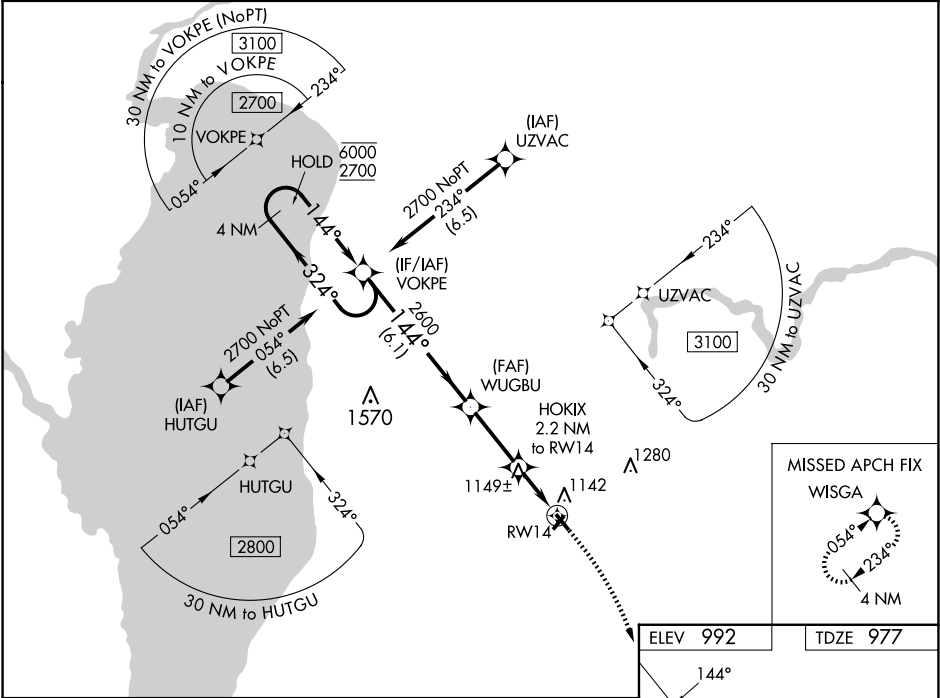
**125.9**

MILWAUKEE APP CON

**127.0 263.075**

UNICOM

**123.0 (CTAF) 0**



VGSI and RNAV glidepath not coincident (VGSI Angle 3.20/TCH 27).

1500

3000

WISGA

4 NM Holding Pattern

VOKPE

WUGBU

HOKIX 2.2 NM to RW14

RW14

6000

2700

GP 3.00° TCH 45

324°

144°

2600

1720

6.1 NM

2.8 NM

2.2 NM

\* LNAV only.

CATEGORY	A	B	C	D
LPV DA	1358-1 $\frac{1}{8}$	381 (400-1 $\frac{1}{8}$ )	NA	
LNAV/VNAV DA	1390-1 $\frac{1}{4}$	413 (400-1 $\frac{1}{4}$ )	NA	
LNAV MDA	1480-1	503 (500-1)	NA	

ELEV 992

TDZE 977

144°

225° X 250

22

0.03% UP

3600 X 75

32

REIL Rwy 14 and 32 0

MIRL Rwy 14-32 0