

WAAS CH 97405 W19A	APP CRS 187°	Rwy Idg TDZE 1497 Apt Elev 1497
--	------------------------	---

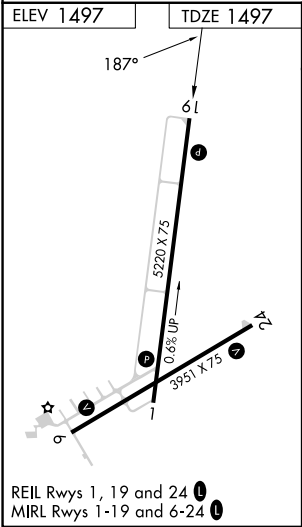
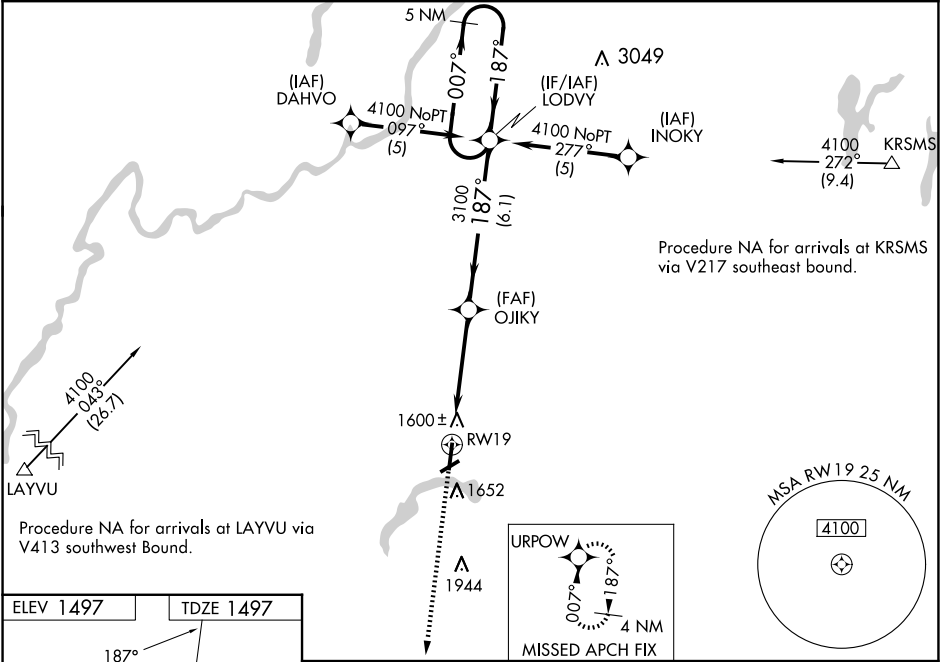
RNAV (GPS) RWY 19

PRICE COUNTY (PBH)

▼ Baro-VNAV NA when using Minocqua-Woodruff altimeter setting. When local alimeter setting not received, use Minocqua-Woodruff altimeter setting and increase all DA 91 feet and all Cats visibility 3/8 mile, increase all MDA 100 feet and all Cats C and D visibility 1/4 mile. For uncompensated Baro-VNAV systems, LNAV/VNAV NA below -17°C (2°F) or above 34°C (93°F). DME/DME RNP-0.3 NA. Helicopter visibility reduction below 3/4 SM NA. Night landing: Rwy 6, 24 NA.

MISSED APPROACH:
Climb to 4000 direct
URPOW and hold.

AWOS-3 125.875	MINNEAPOLIS CENTER 133.65 281.5	UNICOM 122.8 (CTAF) 0
--------------------------	---	---------------------------------



4000	URPOW	VGSI and RNAV glidepath not coincident (VGSI Angle 3.00/TCH 45).	LODVY	5 NM Holding Pattern
CATEGORY	A	B	C	D
LPV DA	1843-1 3/8 346 (400-1 1/8)			
LNAV/VNAV DA	1886-1 3/8 389 (400-1 3/8)			
LNAV MDA	1920-1 423 (500-1)	1920-1 1/4 423 (500-1 1/4)		
CIRCLING	2100-1 603 (700-1)	2100-1 3/4 603 (700-1 3/4)		2260-2 1/2 763 (800-2 1/2)