

WAAS CH 99547 W27A	APP CRS 271°	Rwy Ldg TDZE Apt Elev	5010 777 778
--	------------------------	-----------------------------	---

RNAV (GPS) RWY 27
RED WING RGNI (R.G.K)

RFD WING RGNI (R.GK)

RNP APCH - GPS.	
-----------------	--

T Circling Rwy 9 NA at night. For uncompensated Baro-VNAV
A systems, LNAV/VNAV NA below -16°C or above 54°C.
Rwy 27 helicopter visibility reduction below $\frac{3}{4}$ SM NA.

ODALS



MISSED APPROACH: Climb to 3000 direct JUGAN and hold.

AWOS-3

119.25

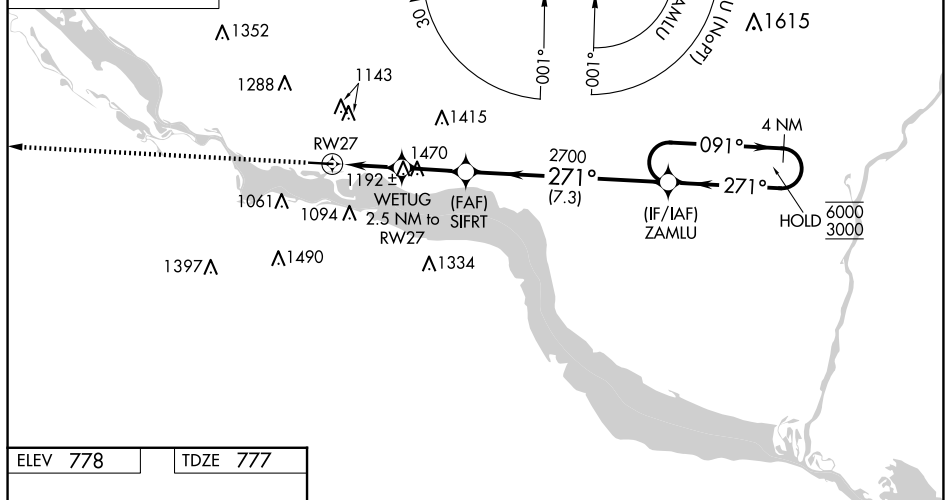
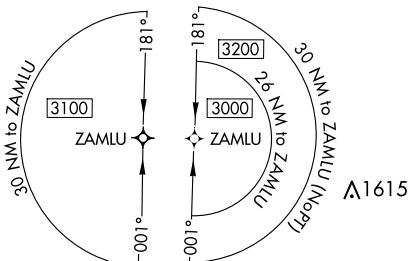
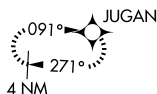
MINNEAPOLIS APP CON

121.2 335.65

UN|COM

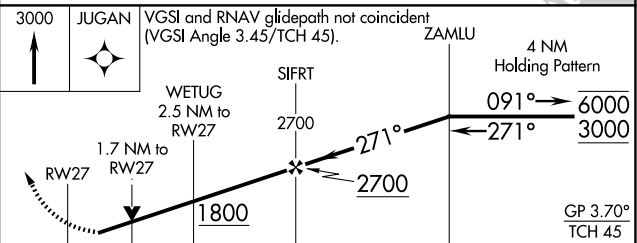
123.05 (CTAF) **L**


MISSED APCH FIX



ELEV 778

TDZE 777



CATEGORY		A	B	C	D
LPV	DA	1046- $\frac{3}{4}$ 269 (300- $\frac{3}{4}$)		1077- $\frac{3}{4}$ 300 (300- $\frac{3}{4}$)	NA
LNAV/ VNAV	DA	1460-1 $\frac{7}{8}$ 683 (700-1 $\frac{7}{8}$)			NA
LNAV	MDA	1460- $\frac{3}{4}$ 683 (700- $\frac{3}{4}$)		1460-1 $\frac{7}{8}$ 683 (700-1 $\frac{7}{8}$)	NA
 CIRCLING		1480-1 702 (800-1)	1520-1 742 (800-1)	1640-2 $\frac{1}{2}$ 862 (900-2 $\frac{1}{2}$)	NA

RED WING, MINNESOTA

Amdt 3 12JUN25

RED WING RGNL (RGK)

44°35'N-92°29'W

RNAV (GPS) RWY 27