

ORTONVILLE, MINNESOTA

AL-6661 (FAA)

22307

WAAS CH 87124 W34A	APP CRS 344°	Rwy Idg 3417 TDZE 1097 Apt Elev 1101
--	------------------------	---

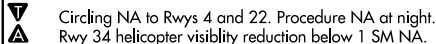
APP CRS
344°

Rwy Idg	3417
TDZE	1097
Apt Elev	1101

RNAV (GPS) RWY 34

ORTONVILLE MUNI/MARTINSON FLD (VVV)

RNP APCH - GPS.




MISSED APPROACH: Climb to 4500 direct NILIE and on track 295° to RIRCO and hold.

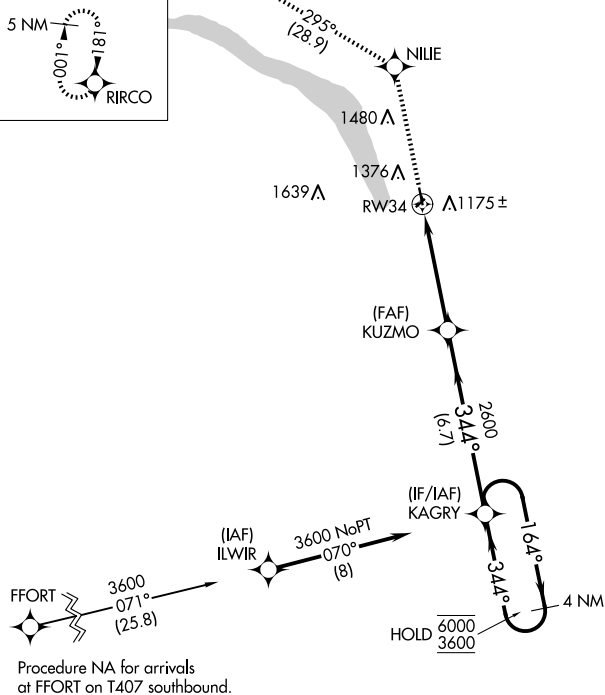
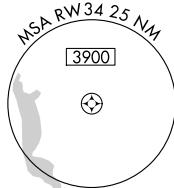
AWOS-3
119.225

MINNEAPOLIS CENTER
128.5 306.2

GCO
121,725

UNICOM
122.8 (CTAF) 

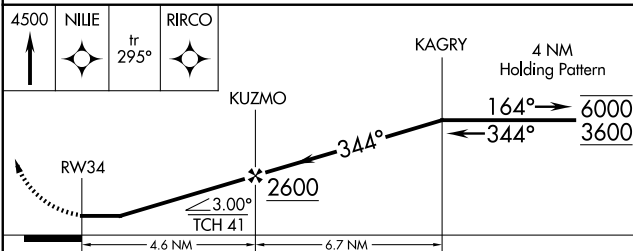
MISSED APCH FIX



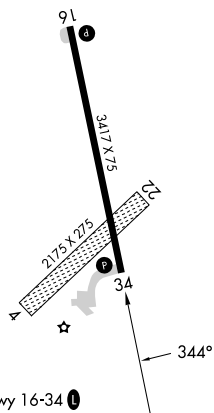
2318A

ELEV 1101

TDZF 1097



CATEGORY	A	B	C	D
LP MDA	1500-1	403 (400-1)	1500-1 $\frac{1}{8}$ 403 (400-1 $\frac{1}{8}$)	NA
LNAV MDA	1500-1	403 (400-1)	1500-1 $\frac{1}{8}$ 403 (400-1 $\frac{1}{8}$)	NA
CIRCLING	1740-1	639 (700-1)	1780-2 679 (700-2)	NA



ORTONVILLE, MINNESOTA

Amdt 1 03NOV22

ORTONVILLE MUNI/MARTINSON FID (VVV)

45°18'N-96°25'W

RNAV (GPS) RWY 34

NC-1, 07 AUG 2025 to 04 SEP 2025