

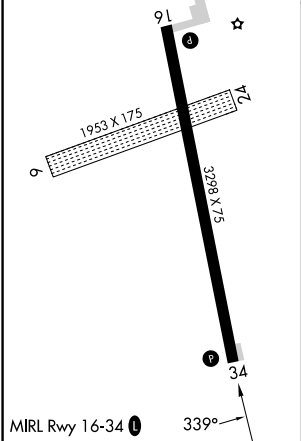
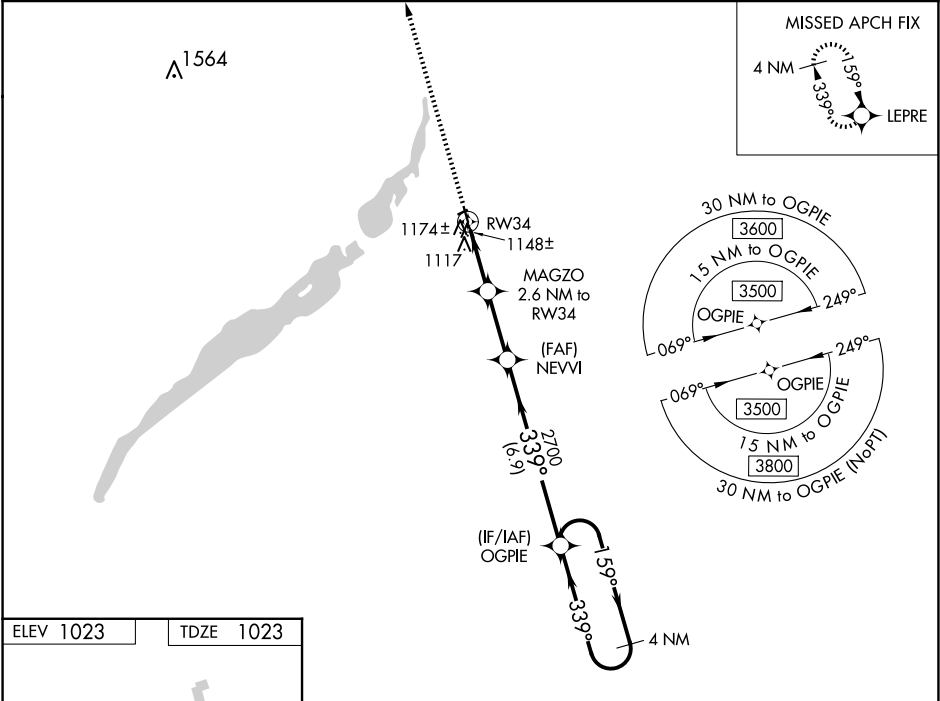
WAAS CH <b>86730</b> <b>W34A</b>	APP CRS <b>339°</b>	Rwy Idg TDZE <b>1023</b> Apt Elev <b>1023</b>
--	------------------------	---




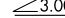
RNAV (GPS) RWY 34

WHEATON MUNI (ETH)

RNP APCH - GPS. ▼ Rwy 34 helicopter visibility reduction below ¼ SM NA. When local altimeter setting not received, use Wahpeton altimeter setting and increase all MDA 80 feet, increase LP and LNAV Cat C visibility to ¾ SM. Circling NA to Rwy 6 and 24. ▲ MISSED APPROACH: Climb to 3500 direct LEPRE and hold.
---

AWOS-3 <b>118.775</b>	MINNEAPOLIS CENTER <b>126.1 269.2</b>	UNICOM <b>122.8</b> (CTAF) <b>0</b>
--------------------------	--	--



3500		LEPRE		VGSI and descent angles not coincident (VGSI Angle 3.00/TCH 25).		4 NM Holding Pattern	
							
				OGPIE		159° → 3500 ← 339°	
		MAGZO 2.6 NM to RW34		NEVVI			
							
		RW34		2700			
		1880					
		2.6 NM		2.5 NM		6.9 NM	
CATEGORY		A		B		C	
LP MDA		1400-1		377 (400-1)		NA	
LNAV MDA		1440-1 417 (500-1)		1440-1½ 417 (500-1½)		NA	
CIRCLING		1480-1 457 (500-1)		1500-1½ 477 (500-1½)		NA	