

WAAS
CH **90240**
W07A

APP CRS
071°

Rwy Idg
TDZE **3131**
Apt Elev **3158**

RNAV (GPS) RWY 7

NEVADA COUNTY (GOO)

RNP APCH.

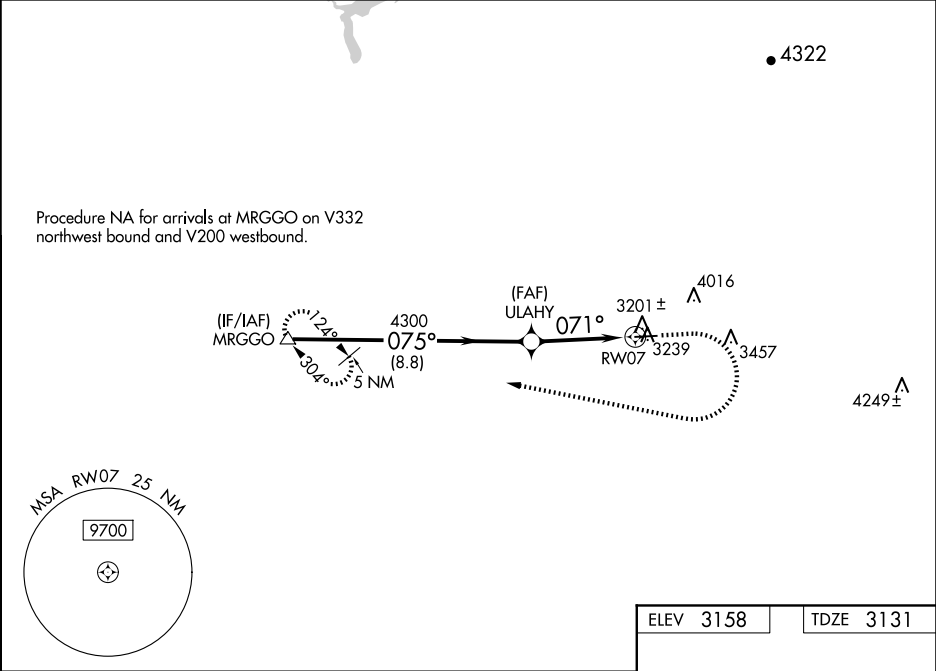
▼

▲

Circling NA north of Rwy 7-25. Circling Rwy 25 NA at night. Rwy 7 helicopter visibility reduction below ¾ SM NA. For uncompensated Baro-VNAV systems, LNAV/VNAV NA below -21°C or above 54°C.

MISSED APPROACH: (Do not exceed 250K until MRGGO) Climb to 3900 then climbing right turn to 6000 direct MRGGO and hold.

AWOS-3 121.325	NORCAL APP CON 125.4 259.1	UNICOM 122.725 (CTAF) 0
--------------------------	--------------------------------------	-----------------------------------



MRGGO		ULAHY		RWY 07	
5000		4300		4300	
GP 3.00° TCH 40		075°		071°	
8.8 NM		1.4 NM		2.3 NM	
CATEGORY	A	B	C	D	
LPV DA	3606-1⅜		475 (500-1⅜)		
LNAV/VNAV DA	3772-1⅞		641 (700-1⅞)		
LNAV MDA	3860-1	729 (800-1)	3860-2	729 (800-2)	
CIRCLING	3860-1	702 (800-1)	3880-2 722 (800-2)	3880-2¼ 722 (800-2¼)	

ELEV 3158

TDZE 3131

MRGGO

3900

6000

MRGGO

071° to RWY 07

1.9% UP → 4657 X 75

25

MIRL Rwy 7-25 0