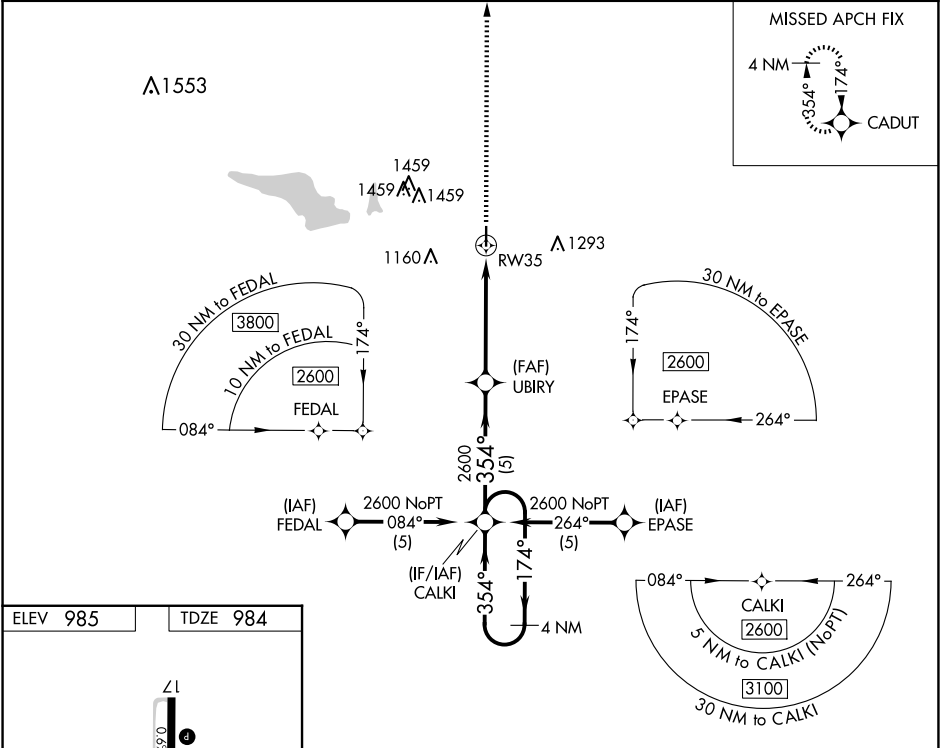


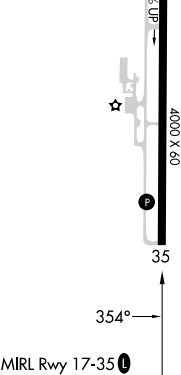


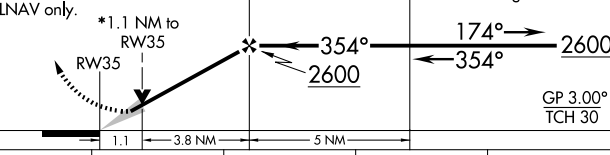
APP CRS	Rwy Idg	4000
354°	TDZE	984
	Apf Elev	985

RNAV (GPS) RWY 35  
CHANDLER RGNL (CQB)

RNP APCH.	MISSED APPROACH: Climb to 2600 direct CADUT and hold.
▼ ▲ NA	When local altimeter setting not received, use Shawnee altimeter setting and increase all MDA 80 feet; increase LNAV Cat C visibility 1/8 SM. VDP NA with Shawnee Rgnl altimeter setting.

AWOS-3PT 119.275	KANSAS CITY CENTER 127.8 319.1	CTAF 122.9 0
---------------------	-----------------------------------	-----------------



 <p>MIRL Rwy 17-35</p>	 <p>2600</p>		 <p>CADUT</p>		VGSi and descent angles not coincident (VGSi Angle 3.00/TCH 42).					
	*LNAV only.		*1.1 NM to RW35							
	CATEGORY		A		B		C		D	
	GLS PA DA		A		B		C		D	
	LNAV/VNAV DA		A		B		C		D	
LNAV MDA		1320-1		335 (400-1)		C		D		