

APP CRS
174°

Rwy Idg
4000

TDZE
984

Apt Elev
985

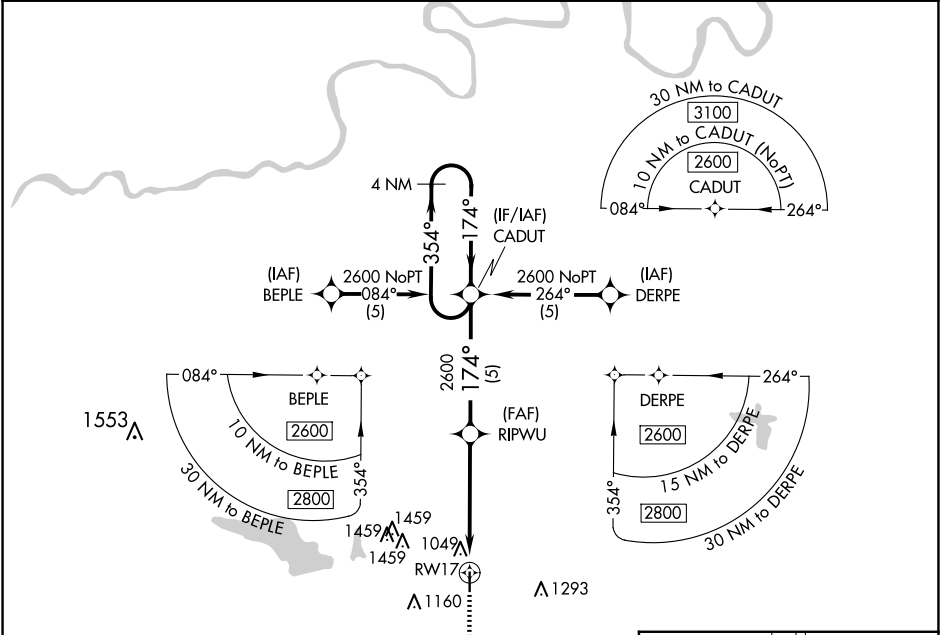
RNAV (GPS) RWY 17
CHANDLER RGNL (CQB)

RNP APCH.

When local altimeter setting not received, use Shawnee altimeter setting and increase all MDA 80 feet; increase LNAV Cat C visibility 1/8 SM.

MISSED APPROACH: Climb to 2600 via 174° course to CALKI WP and hold.

AWOS-3PT 119.275	KANSAS CITY CENTER 127.8 319.1	CTAF 122.9 0
---------------------	-----------------------------------	-----------------



MISSED APCH FIX

CALKI

354°

174°

4 NM

4 NM Holding Pattern

VGSI and descent angles not coincident (VGSI Angle 3.00/TCH 42).

2600

CALKI

2600

354°

174°

174° crs

5 NM

4 NM

1 NM

CATEGORY

A

B

C

D

LNAV MDA

1300-1

316 (400-1)

NA

MIRL Rwy 17-35 0

SC-1, 07 AUG 2025 to 04 SEP 2025

SC-1, 07 AUG 2025 to 04 SEP 2025