

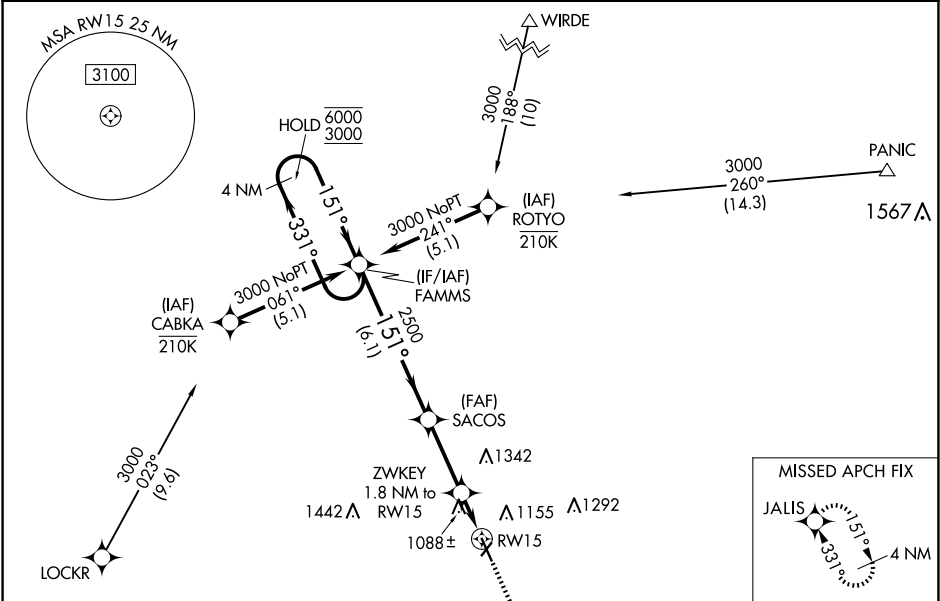
APP CRS	Rwy Idg	5100
151°	TDZE	968
	Apt Elev	968

RNAV (GPS) RWY 15

HARRY STERN (BWP)

RNP APCH - GPS.	MISSED APPROACH: Climb to 3000 direct JALIS and hold.
<div><div>▼</div><div>⚠</div></div> <div>Circling NA to Rwy 3 and 21. Rwy 15 helicopter visibility reduction below ¾ SM NA. VDP NA when using FFM altimeter setting. When local altimeter setting not received, use FFM altimeter setting and increase all MDAs 80 feet and LNAV visibility Cat C and D ¾ SM, and Circling visibility Cat C and D ¼ SM.</div>	

AWOS-3 127.875	MINNEAPOLIS CENTER 127.35 278.3	UNICOM 123.0 (CTAF) 0
-------------------	------------------------------------	--------------------------



Procedure NA for arrivals at LOCKR on T407 southbound.

MISSED APCH FIX

<div>4 NM Holding Pattern</div> <div>FAMMS</div> <div>SACOS</div> <div>ZWKEY 1.8 NM to RW15</div> <div>3000 JALIS</div> <div>6000 ← 331° 3000 → 151°</div> <div>151°</div> <div>2500</div> <div>3.00° TCH 42</div> <div>1 NM to RW15</div> <div>1580</div> <div>1 NM</div> <div>6.1 NM</div> <div>2.9 NM</div> <div>0.8</div> <div>1 NM</div>				
CATEGORY	A	B	C	D
LNAV MDA	1340-1 372 (400-1)			
CIRCLING	1520-1	552 (600-1)	1660-2 692 (700-2)	1660-2¼ 692 (700-2¼)

151°

5100 X 75

324 X 180

33

MIRL Rwy 15-33  
REIL Rws 15 and 33

NC-1, 07 AUG 2025 to 04 SEP 2025

NC-1, 07 AUG 2025 to 04 SEP 2025