

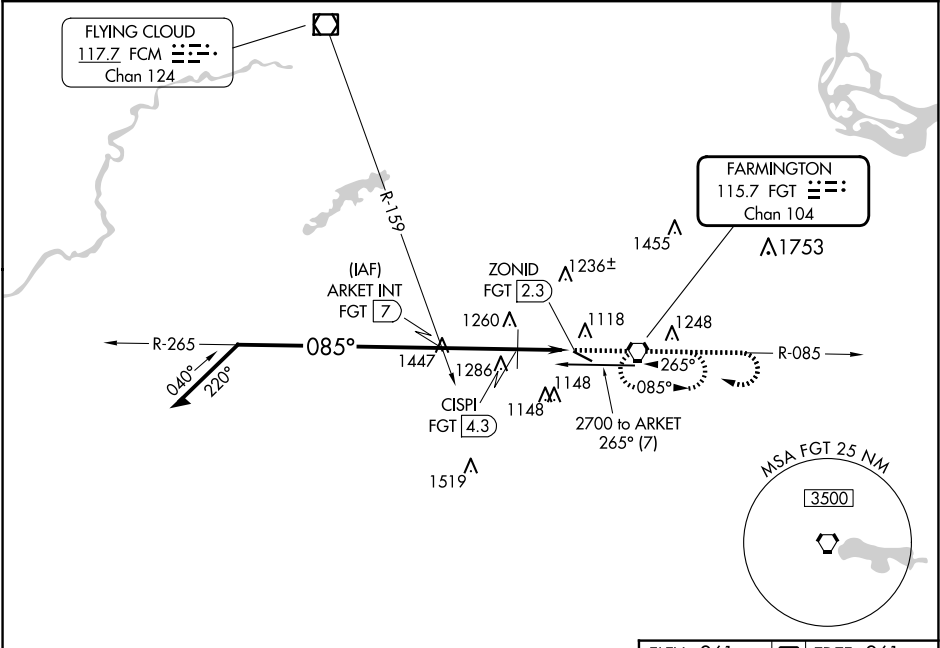
VORTAC FGT 115.7 Chan 104	APP CRS 085°	Rwy Idg 4099 TDZE 961 Apt Elev 961
---	------------------------	---

VOR RWY 12
AIRLAKE (LVN)

V Rwy 12 helicopter visibility reduction below 1 SM NA.
A Straight-in Rwy 12, Circling Rwy 12 at night, operational VGSI required, remain on or above VGSI glidepath until threshold.

MISSED APPROACH: Climb to 2800 then right turn direct FGT VORTAC and hold.

AWOS-3 118.0	MINNEAPOLIS APP CON 134.7 284.7	CLNC DEL 118.95	UNICOM 123.0 (CTAF)
------------------------	---	---------------------------	-------------------------------



Remain within 10 NM

2700

265°

085°

2600

1660

2.7 NM

2 NM

2800

FGT

VGSI and descent angles not coincident (VGSI Angle 3.00/TCH 45).

3.16° TCH 54

CISPI FGT 4.3

ZONID FGT 2.3

085°

4099 X 7.5

AS

0.5

CATEGORY	A	B	C	D
S-12	1660-1	699 (700-1)	1660-2	699 (700-2)
CIRCLING	1660-1	699 (700-1)	1660-2 699 (700-2)	1700-2¼ 739 (800-2¼)
CISPI FIX MINIMUMS				
S-12	1520-1	559 (600-1)	1520-1½	559 (600-1½)
CIRCLING	1520-1	559 (600-1)	1660-2 699 (700-2)	1700-2¼ 739 (800-2¼)

ELEV 961

TDZE 961

085°

REIL Rwy 12

HIRL Rwy 12-30

FAF to MAP 4.7 NM

Knots	60	90	120	150	180
Min:Sec	4:42	3:08	2:21	1:53	1:34

NC-1, 07 AUG 2025 to 04 SEP 2025

NC-1, 07 AUG 2025 to 04 SEP 2025