

WAAS CH 57920 W12A	APP CRS 114°	Rwy Idg 4099 TDZE 961 Apt Elev 961
--	------------------------	---

RNAV (GPS) RWY 12

AIRLAKE (LVN)

RNP APCH.

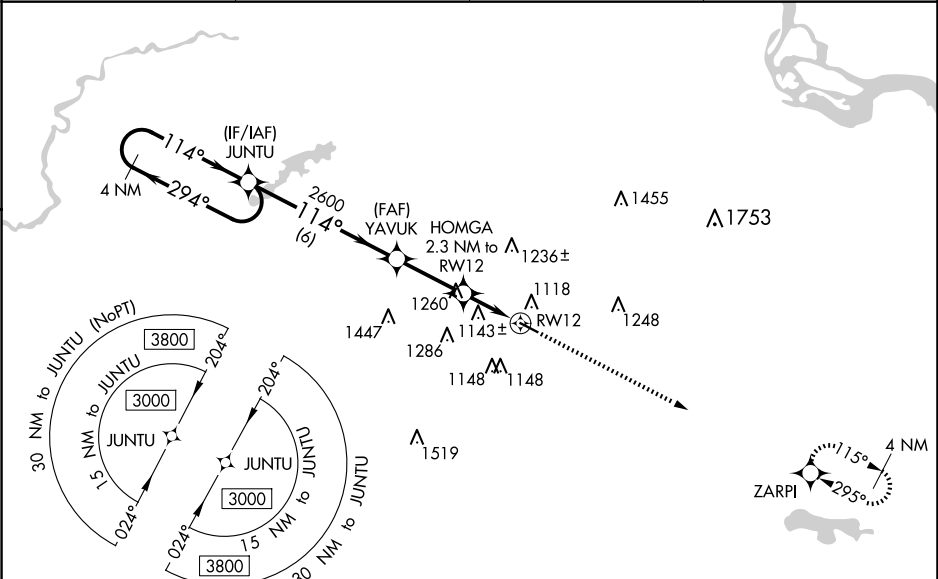
▼

▲

For uncompensated Baro-VNAV systems, LNAV/VNAV NA below -16°C (4°F) or above 54°C (130°F). Rwy 12 helicopter visibility reduction below 1 SM NA. Straight-in Rwy 12, Circling Rwy 12 at night, operational VGSI required, remain on or above VGSI glidepath until threshold.

MISSED APPROACH: Climb to 3600 direct ZARPI and hold.

AWOS-3 118.0	MINNEAPOLIS APP CON 134.7 284.7	CLNC DEL 118.95	UNICOM 123.0 (CTAF) 0
------------------------	---	---------------------------	---------------------------------



4 NM Holding Pattern

JUNTU

3000

294°

114°

GP 3.00°

TCH 54

VGSI and RNAV glidepath not coincident (VGSI Angle 3.00/TCH 45).

YAVUK

2600

HOMGA

2.3 NM to RW12

RW12

*1740

6 NM

2.7 NM

2.3 NM

3600

ZARPI

*LNAV only

CATEGORY	A	B	C	D
LPV DA	1211-1 250 (300-1)			
LNAV/VNAV DA	1270-1 309 (400-1)			
LNAV MDA	1400-1 439 (500-1)		1400-1¼ 439 (500-1¼)	
CIRCLING	1460-1 499 (500-1)		1660-2 699 (700-2) 1700-2¼ 739 (800-2¼)	

ELEV 961

D

TDZE 961

114°

4099 X 75

0 5

REIL Rwy 12 0

HIRL Rwy 12-30 0