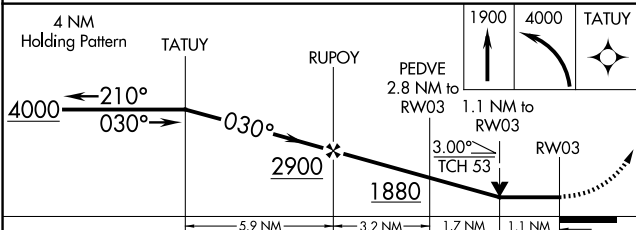
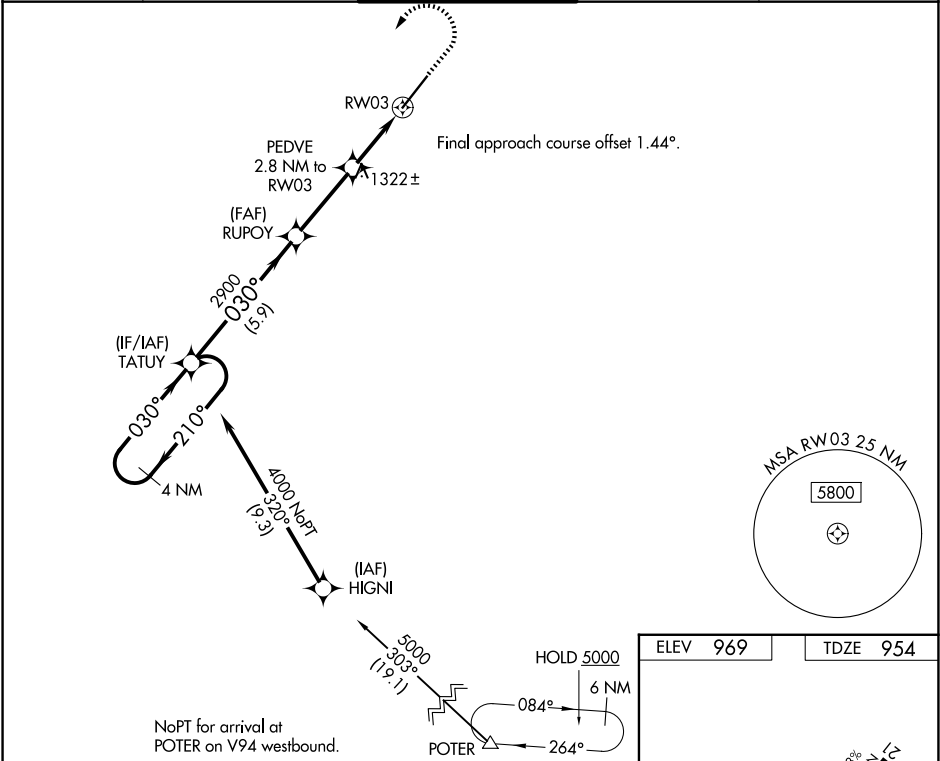


WAAS CH 42839 W03A	APP CRS 030°	Rwy Ldg 8500 TDZE 954 Apt Elev 969
--	------------------------	---

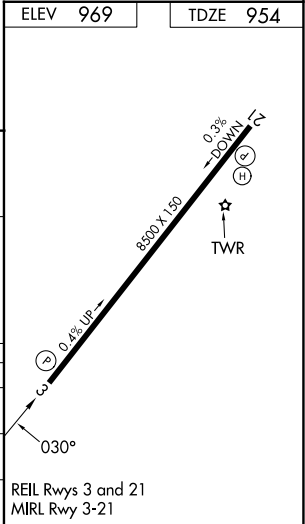
RNAV (GPS) RWY 3
PHOENIX GOODYEAR (GYR)

RNP APCH.		MISSED APPROACH: Climb to 1900 then climbing left turn to 4000 direct TATUY and hold.	
▼ NA Procedure NA at night. Helicopter visibility reduction below ¾ SM NA. VDP NA when using Phoenix Sky Harbor Intl altimeter setting. When local altimeter setting not received, use Phoenix Sky Harbor Intl altimeter setting: increase all MDA 80 feet and visibility LP/LNAV Cat C/D and Circling Cat C ¼ SM.			

ATIS 118.35	LUKE APP CON ★ 125.45 263.125	GOODYEAR TOWER ★ 120.1 (CTAF) 239.3	GND CON 121.7	UNICOM 122.95
-----------------------	---	---	-------------------------	-------------------------



CATEGORY	A	B	C	D
LP MDA	1340-1	386 (400-1)	1340-1½	386 (400-1½)
LNAV MDA	1580-1	626 (700-1)	1580-1¾	626 (700-1¾)
CIRCLING	1580-1	611 (700-1)	1860-2¾ 891 (900-2¾)	1920-3 951 (1000-3)



SW-4, 07 AUG 2025 to 04 SEP 2025

SW-4, 07 AUG 2025 to 04 SEP 2025