

SW-4, 07 AUG 2025 to 04 SEP 2025

ATIS  
118.35  
GND CON  
121.7  
GOODYEAR TOWER ★  
120.1 239.3  
LUKE DEP CON ★  
125.45 263.125  
PHOENIX DEP CON  
120.7 239.0

DEPARTURE ROUTE DESCRIPTION

TAKEOFF RUNWAY 3: Climb heading 028° or as assigned by ATC, thence. . . .

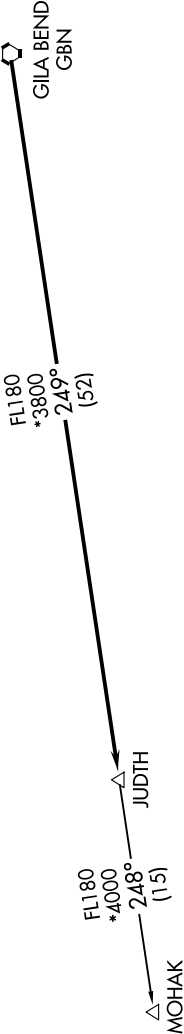
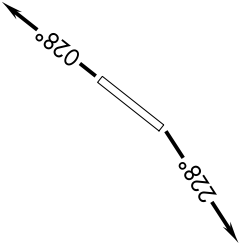
TAKEOFF RUNWAY 21: Climb heading 228° or as assigned by ATC, thence. . . .

. . . expect RADAR vectors to GBN VORTAC, then on track 249° to JUDTH, then on (transition). Maintain ATC assigned altitude, expect filed altitude 3 minutes after departure.

MOHAK TRANSITION (JUDTH7.MOHAK)

- NOTE: RNAV 1.
- NOTE: Turbojets and turboprops only.
- NOTE: RADAR required.
- NOTE: GPS required.
- NOTE: Aircraft departing KGEU and KGYR ATC assigned only.

TAKEOFF MINIMUMS  
Rwys 3, 21: Standard.



NOTE: Chart not to scale.

SW-4, 07 AUG 2025 to 04 SEP 2025