

APP CRS 254°	Rwy Idg TDZE Apt Elev	N/A N/A 1478
------------------------	-----------------------------	---

RNAV (GPS)-B

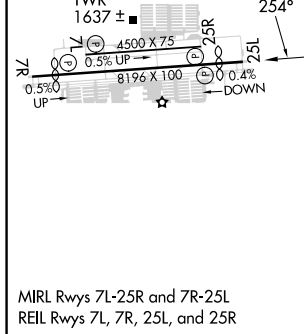
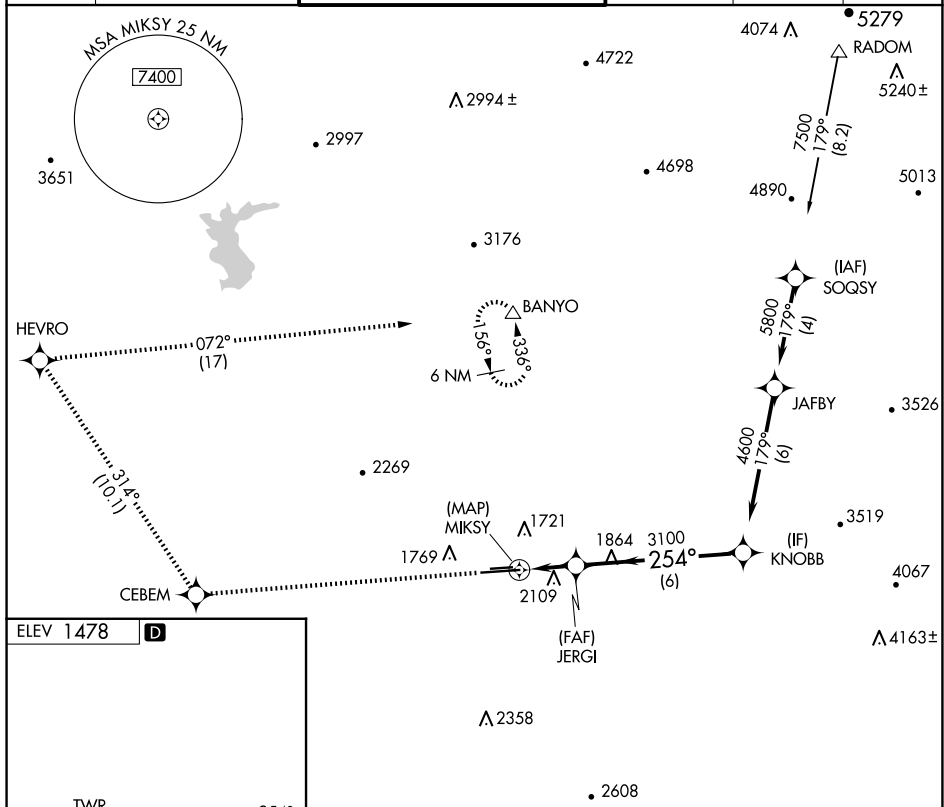
PHOENIX DEER VALLEY (DVT)

RNP APCH - GPS.

T When VGSI inop, Circling to Rwy 25R NA at night. Circling not authorized at night north of Rwy 7R-25L. When local altimeter setting not received, use Scottsdale altimeter setting and increase all MDAs 40 feet and Circling Cat B visibility $\frac{1}{4}$ SM.

MISSED APPROACH: Climb to 6000
direct CEBEM and on track 314° to
HEVRO and right turn on track 072°
to BANYO and hold.

ATIS 126.5	PHOENIX APP CON 120.7 239.0	DEER VALLEY TOWER★ 118.4 (070°-250°) (CTAF) 120.2 (251°-069°)	GND CON 121.8	CLNC DEL 123.9	UNICOM 122.95
----------------------	---------------------------------------	---	-------------------------	--------------------------	-------------------------



CATEGORY	A	B	C	D
CIRCLING	2400-1¼ 922 (1000-1¼)	2420-1¼ 942 (1000-1¼)	2580-3 1102 (1200-3)	NA

SW-4, 07 AUG 2025 to 04 SEP 2025