

| | | | |
|--|------------------------|-----------------------------|---|
| WAAS CH 72917 W07A | APP CRS 074° | Rwy Idg TDZE Apt Elev | 7299 1460 1478 |
|--|------------------------|-----------------------------|---|

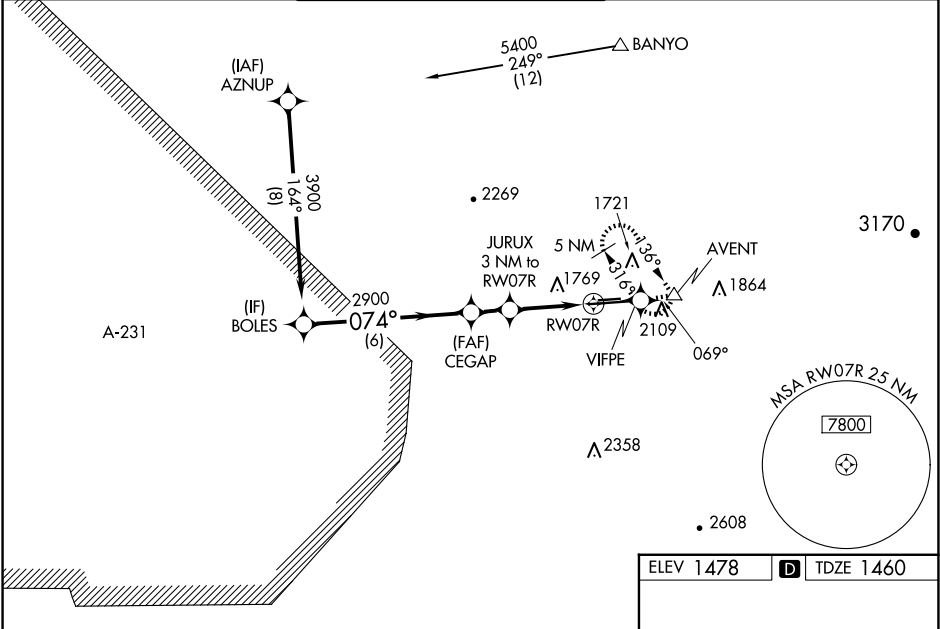
RNAV (GPS) RWY 7R
PHOENIX DEER VALLEY (DVT)

RNP APCH - GPS.

⚠ When VGSI inop, Circling Rwy 25R NA at night. When local altimeter setting not received, use Scottsdale altimeter setting: increase LPV DA to 1822 feet and all visibilities $\frac{1}{8}$ SM, increase LNAV/VNAV DA to 2160 feet and all visibilities $\frac{1}{8}$ SM, increase all MDAs 40 feet and increase Circling Cat B visibility $\frac{1}{4}$ SM. For uncompensated Baro-VNAV systems, LNAV/VNAV NA below -17°C or above 54°C. Baro VNAV and VDP NA when using Scottsdale altimeter setting. Circling NA north of Rwy 7R-25L at night.

MISSED APPROACH: Climb to 5000 direct VIFPE and track 069° to AVENT and hold, continue climb-in-hold to 5000.

| | | | | | |
|----------------------|---------------------------------------|--|-------------------------|--------------------------|-------------------------|
| ATIS 126.5 | PHOENIX APP CON 120.7 239.0 | DEER VALLEY TOWER ★ 118.4 (070°-250°) (CTAF) 120.2 (251°-069°) | GND CON 121.8 | CLNC DEL 123.9 | UNICOM 122.95 |
|----------------------|---------------------------------------|--|-------------------------|--------------------------|-------------------------|



VGSI and RNAV glidepath not coincident (VGSI Angle 3.00/TCH 46).

BOLES 3900 074° 2900 CEGAP 2900 JURUX 3 NM to RW07R 1.8 NM to RW07R RW07R

GP 3.00° TCH 42

6 NM 1.4 NM 1.2 NM 1.8 NM

| | | | | |
|--------------|---|---|----------------------------|----------------------------|
| CATEGORY | A | B | C | D |
| LPV DA | | 1795-1 $\frac{1}{8}$ | 335 (400-1 $\frac{1}{8}$) | |
| LNAV/VNAV DA | | 2133-2 $\frac{1}{2}$ | 673 (700-2 $\frac{1}{2}$) | |
| LNAV MDA | 2060-1 | 600 (600-1) | 2060-1 $\frac{3}{4}$ | 600 (600-1 $\frac{3}{4}$) |
| CIRCLING | 2400-1 $\frac{1}{4}$ 922 (1000-1 $\frac{1}{4}$) | 2420-1 $\frac{1}{4}$ 942 (1000-1 $\frac{1}{4}$) | 2580-3 1102 (1200-3) | 2700-3 1222 (1300-3) |

ELEV 1478 TDZE 1460

5000 VIFPE tr 069° AVENT

TWR 1637 ±

4500 X 75 0.5% UP 81% X 100 0.4% DOWN

MIRL Rwy 7L-25R and 7R-25L
REIL Rwy 7L, 7R, 25L, and 25R