

WAAS CH 90326 W34A	APP CRS 344°	Rwy Idg 3502 TDZE 1279 Apt Elev 1279
--	------------------------	---

RNAV (GPS) RWY 34

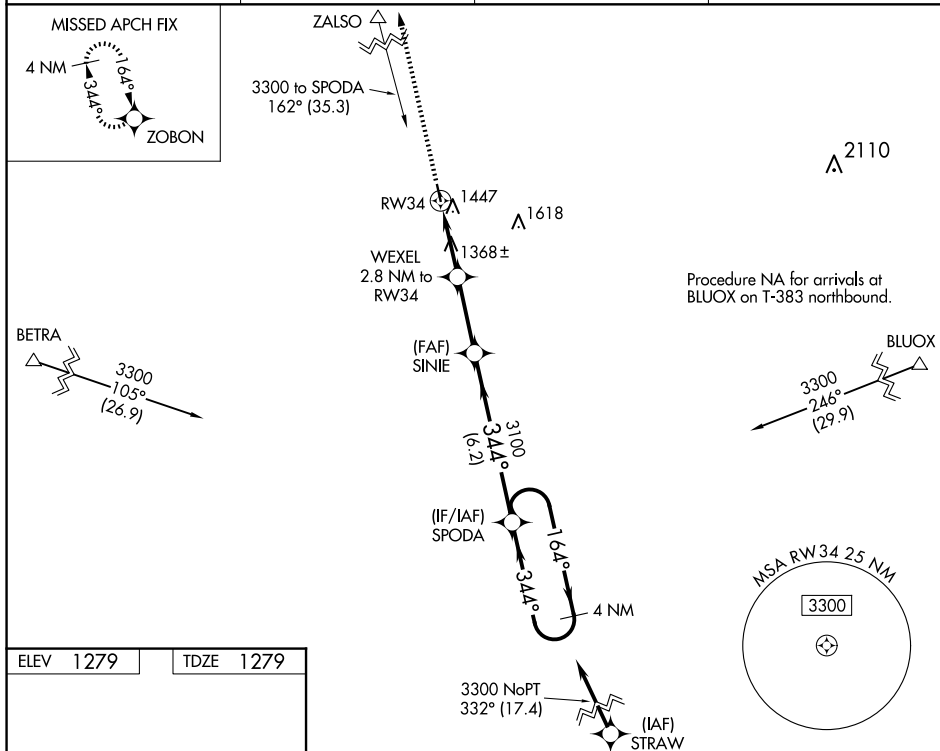
FOSSTON MUNI/ANDERSON FLD (FSE)

RNP APCH.

▼ VDP NA when using Thief River Falls altimeter setting. When local altimeter setting not received, use Thief River Falls altimeter setting and increase all MDA 100 feet and increase LP and LNAV Cat C visibility $\frac{3}{8}$ SM, and increase Circling Cat C visibility $\frac{1}{2}$ SM.

MISSED APPROACH:
Climb to 4000 direct
ZOBON and hold.

AWOS-3 118.35	MINNEAPOLIS CENTER 134.75 251.1	GCO 121.725	CTAF 122.9 0
-------------------------	---	-----------------------	------------------------



3.607 x 75
0.4% Up
34
344°

MIRL Rwy 16-34
REIL Rws 16 and 34

3000
3100
2200
344°
344°
164°
3300

4 NM Holding Pattern

WEXEL 2.8 NM to RW34
SINE
SPODA
RW34
1.1 NM to RW34
1.1 NM
1.7 NM
2.8 NM
6.2 NM

3.00°
TCH 40°

4000
ZOBON
VGSI and descent angles not coincident
(VGSI Angle 2.80/TCH 25)

CATEGORY		A	B	C	D
LP	MDA	1620-1	341 (400-1)		NA
LNAV	MDA	1760-1	481 (500-1)	1760-1 ³ / ₈ 481 (500-1 ³ / ₈)	NA
CIRCLING		1860-1	581 (600-1)	1860-1 ¹ / ₂ 581 (600-1 ¹ / ₂)	NA

