

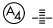
WAAS CH 49202 W36A	APP CRS 359°	Rwy Ldg TDZE 589 Apt Elev 589
--	------------------------	---

RNAV (GPS) RWY 36

MCKINNEY NTL (TKI)

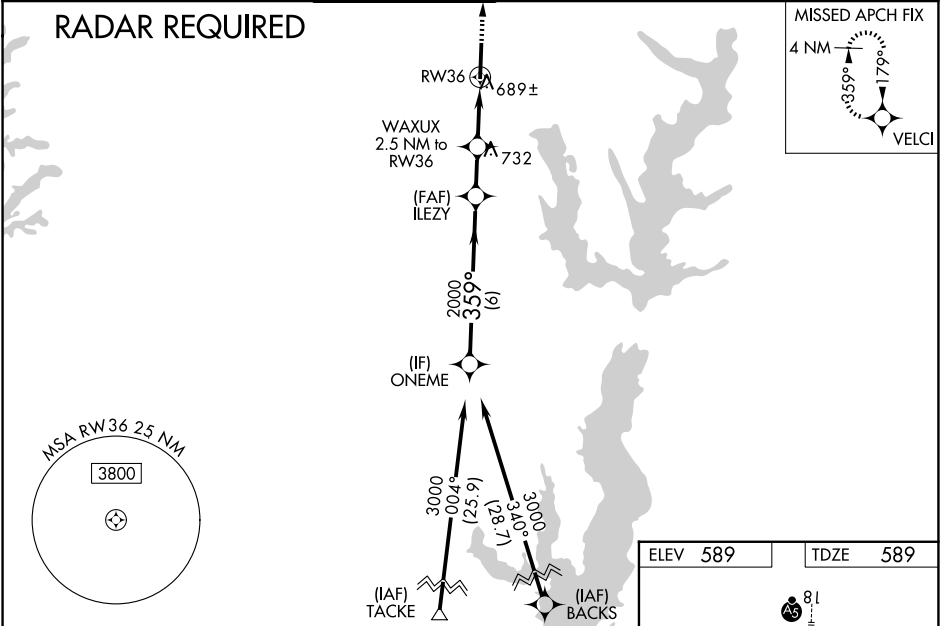
⚠ For uncompensated Baro-VNAV systems, LNAV/VNAV NA below -8°C (18°F) or above 54°C (130°F). When local altimeter setting not received, use Dallas Love Fld altimeter setting and increase all DA 70 feet and all MDA 80 feet, and increase LNAV/VNAV all Cats visibility ½ mile, LNAV Cat C/D and Circling Cat C/D visibility ¼ mile.
DME/DME RNP-0.3 NA. VDP and Baro-VNAV NA when using Dallas Love Fld altimeter setting. For inop MALS increase LNAV/VNAV all Cats visibility to ¾ mile and LNAV Cat D visibility to 1 mile. For inop MALS when using Dallas Love Fld altimeter setting increase LPV all Cats visibility to ¾ mile, LNAV/VNAV Cat D visibility to 1½ mile, and LNAV Cat D visibility to 1¼ mile. Inop table does not apply to LPV all Cats.

MALS



MISSED APPROACH:
Climb to 3000 direct
VELCI and hold.

ATIS 119.925	LONE STAR APP CON 124.3 282.275	MCKINNEY TOWER ★ 118.825 (CTAF) 0	GND CON 121.875	CLNC DEL 121.35 (When twr closed)	UNICOM 122.95
------------------------	---	--	---------------------------	--	-------------------------



ONEME		3000		359°		2000		ILEZY		2000		WAXUX 2.5 NM to RW36		*0.9 NM to RW36		*LNAV only.		3000		VELCI	
GP 3.00° TCH 50																					
		6 NM		1.8 NM		1.6 NM		0.9 NM													
CATEGORY	A	B	C	D																	
LPV DA	789-¾ 200 (200-¾)																				
LNAV/ VNAV DA	850-¾ 261 (300-¾)																				
LNAV MDA	940-¾ 351 (400-¾)																				
CIRCLING	1120-1 531 (600-1)										1200-1¾ 611 (700-1¾)					1380-2½ 791 (800-2½)					

