

KINGDOM FIVE DEPARTURE

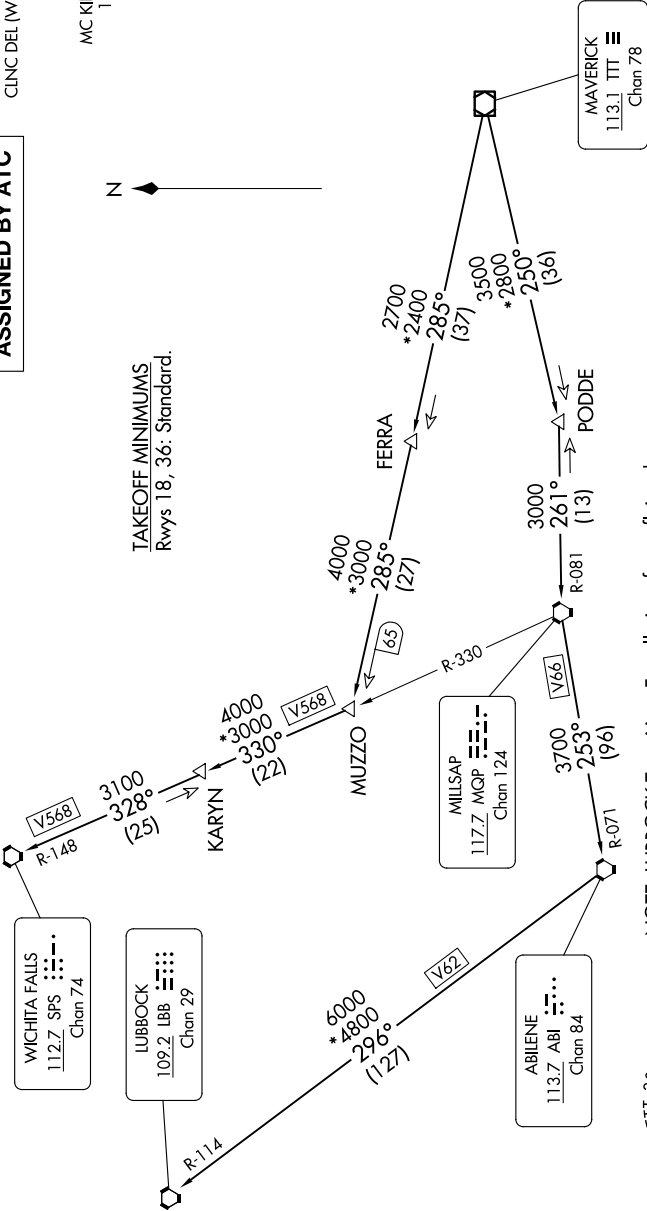
SC-2, 07 AUG 2025 to 04 SEP 2025

LONE STAR DEP CON
124.3 282.275
CLNC DEL (When hwr closed)
121.35
GND CON
121.875
MC KINNEY TOWER ★
118.825 (CTAF)

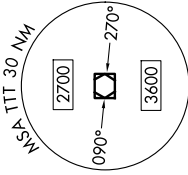
TOP ALTITUDE:
ASSIGNED BY ATC

RADAR and DME required.

TAKEOFF MINIMUMS
Rwys 18, 36: Standard.



- NOTE: LUBBOCK Transition: For all aircraft overflying the MQP VORTAC westbound or direct.
- NOTE: MILLSAP Transition: For all aircraft overflying the MQP VORTAC westbound or direct.
- NOTE: PODDE Transition: ATC assigned.
- NOTE: WICHITA FALLS Transition: For all aircraft landing within the Wichita Falls terminal area or overflying the SPS VORTAC.
- NOTE: For all aircraft requesting 17000 and below.



NOTE: Chart not to scale.

(CONTINUED ON FOLLOWING PAGE)

KINGDOM FIVE DEPARTURE