

APP CRS	Rwy Idg	3998
028°	TDZE	268
	Apt Elev	270

RNAV (GPS) RWY 3

CENTRAL MAINE/NORRIDGEWOCK (OWK)

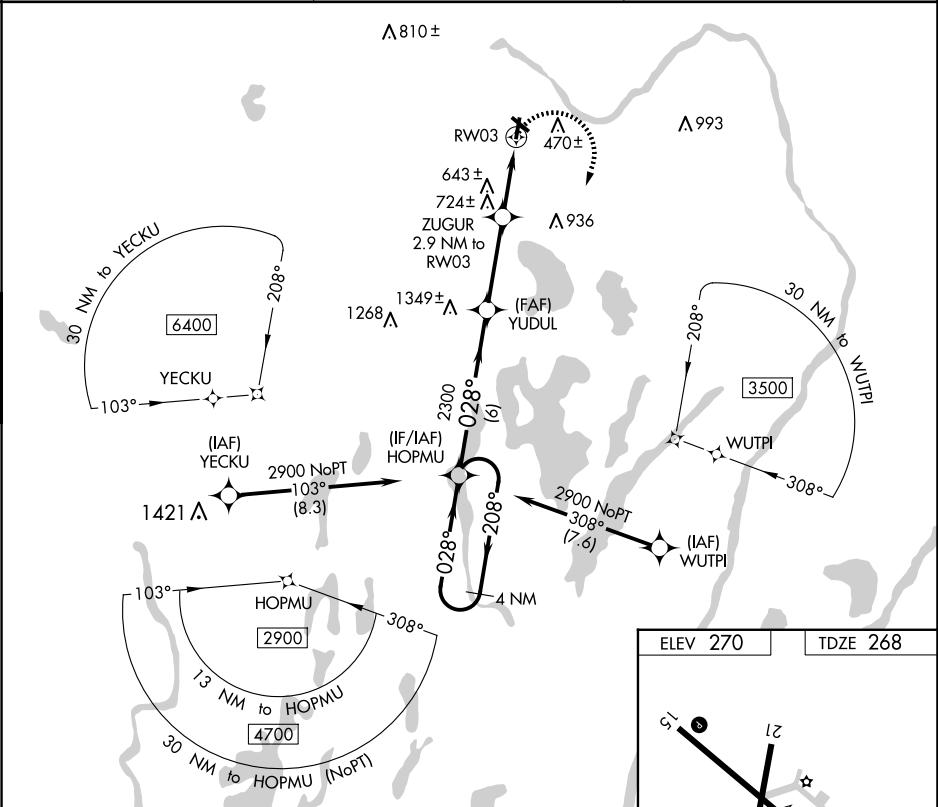
▼

NA

DME/DME RNP-0.3 NA. When local altimeter setting not received, use Augusta State altimeter setting and increase all MDA 80 feet; increase LNAV Cat B visibility ¼ mile and Cat C visibility ½ mile and Circling Cat B visibility ¼ mile and Cat C visibility ½ mile. Procedure NA at night. Helicopter visibility reduction below 1 SM NA.

MISSED APPROACH: Climbing right turn to 2900 direct HOPMU and hold.

AWOS-AV 123.075	PORTLAND APP CON ★ 128.35 299.2	UNICOM 122.8 (CTAF) 0
--------------------	------------------------------------	--------------------------



4 NM Holding Pattern		Visual Segment - Obstacles.		2900	HOPMU
2900 ← 208°		028° →		028°	
2900		2300		1220	
6 NM		3.4 NM		2.9 NM	
CATEGORY	A	B	C	D	
LNAV MDA	980-1	712 (800-1)	980-2 712 (800-2)	NA	
CIRCLING	980-1	710 (800-1)	1080-2¼ 810 (900-2¼)	NA	

