

WAAS CH 77740 W15A	APP CRS 148°	Rwy Idg TDZE Apt Elev	4000 270 270
--	------------------------	-----------------------------	---

RNAV (GPS) RWY 15

CENTRAL MAINE/NORRIDGEWOCK (OWK)

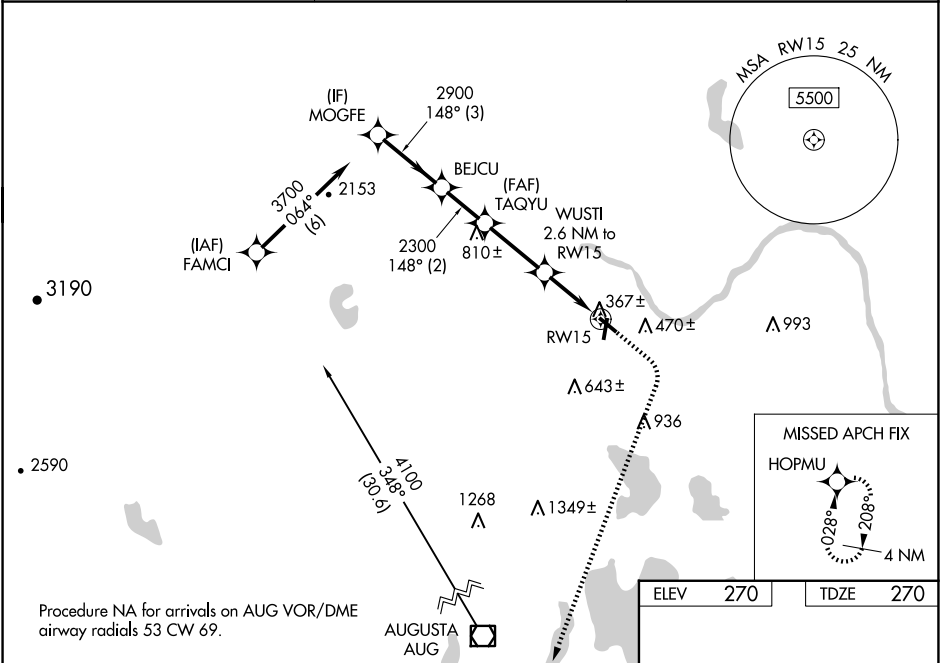
▼

▲ NA

For uncompensated Baro-VNAV systems, LNAV/VNAV NA below -15°C (5°F) or above 54°C (130°F). Baro-VNAV and VDP NA when using Augusta State altimeter setting. Rwy 15 helicopter visibility reduction below ¾ SM NA. DME/DME RNP-0.3 NA. When local altimeter setting not received, use Augusta State altimeter setting; increase LPV DA to 607 feet, LNAV/VNAV DA 659 feet and LNAV/VNAV visibility all Cats ½ SM. Increase all MDA 80 feet and LNAV Cat C visibility ¼ SM and Circling Cat C visibility ½ SM. Circling Rwy 3, 21, 33 NA at night.

MISSED APPROACH:
Climb to 800 then climbing right turn to 2900 direct HOPMU and hold.

AWOS-AV 123.075	PORTLAND APP CON ★ 128.35 299.2	UNICOM 122.8 (CTAF) 0
---------------------------	---	---------------------------------



MOGFE		VGSI and descent angles not coincident (VGSI Angle 3.00/TCH 43).		800	2900	HOPMU
3700		148°		↑	↷	★
GP 3.50° TCH 40		BEJCU	TAQYU	WUSTI	*1 NM to RW15	
2900		2300	2300	2.6 NM to RW15	*LNAV only.	
3 NM		2 NM	2.8 NM	1.6 NM	1 NM	
CATEGORY		A	B	C	D	
LPV DA		540-1	270 (300-1)		NA	
LNAV/VNAV DA		592-1	322 (400-1)		NA	
LNAV MDA		680-1	410 (500-1)	680-1 ⅛ 410 (500-1 ⅛)	NA	
Ⓢ CIRCLING		800-1 530 (600-1)	960-1 690 (700-1)	1080-2 ¼ 810 (900-2 ¼)	NA	

