

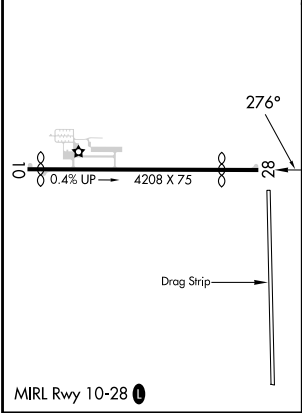
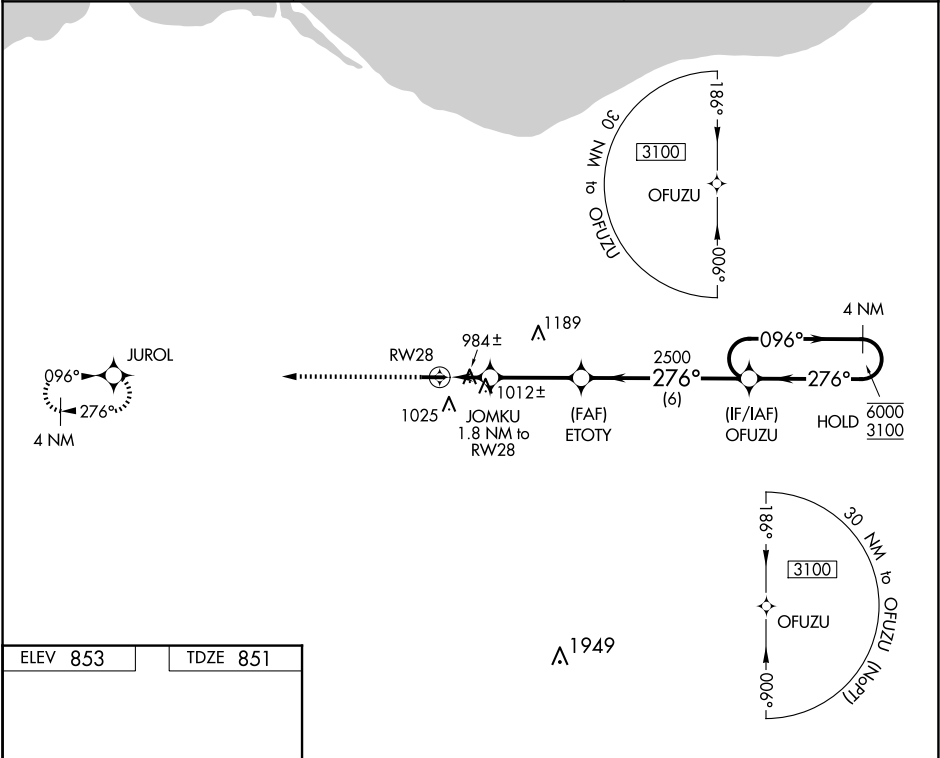
WAAS CH 86835 W28A	APP CRS 276°	Rwy Idg TDZE 851 Apt Elev 853
--	------------------------	---

RNAV (GPS) RWY 28

NORWALK/HURON COUNTY (5A1)

RNP APCH.	Rwy 28 helicopter visibility reduction below 1 SM NA. Procedure NA at night. NA Use Cleveland-Hopkins Intl altimeter setting.	MISSED APPROACH: Climb to 3000 direct JUOL and hold.
-----------	--	--

CLE ASOS 127.85	CLEVELAND APP CON ★ 128.35 360.65	UNICOM 122.8 (CTAF) 0
---------------------------	---	---------------------------------



3000	JUOL	ETOTY	OFUZU	4 NM Holding Pattern
		JOMKU 1.8 NM to RWY 28		
		2500		
		1460		
		1.8 NM	3.3 NM	6 NM
CATEGORY	A	B	C	D
LP MDA	1320-1	469 (500-1)	1320-1 $\frac{3}{8}$ 469 (500-1 $\frac{3}{8}$)	NA
LNAV MDA	1360-1	509 (600-1)	1360-1 $\frac{3}{8}$ 509 (600-1 $\frac{3}{8}$)	NA
CIRCLING	1420-1	567 (600-1)	1440-1 $\frac{1}{2}$ 587 (600-1 $\frac{1}{2}$)	NA