

APP CRS  
**321°**

Rwy Idg  
TDZE **3727**  
Apt Elev **3730**

RNAV (GPS) RWY 32

HOLYOKE (HEQ)

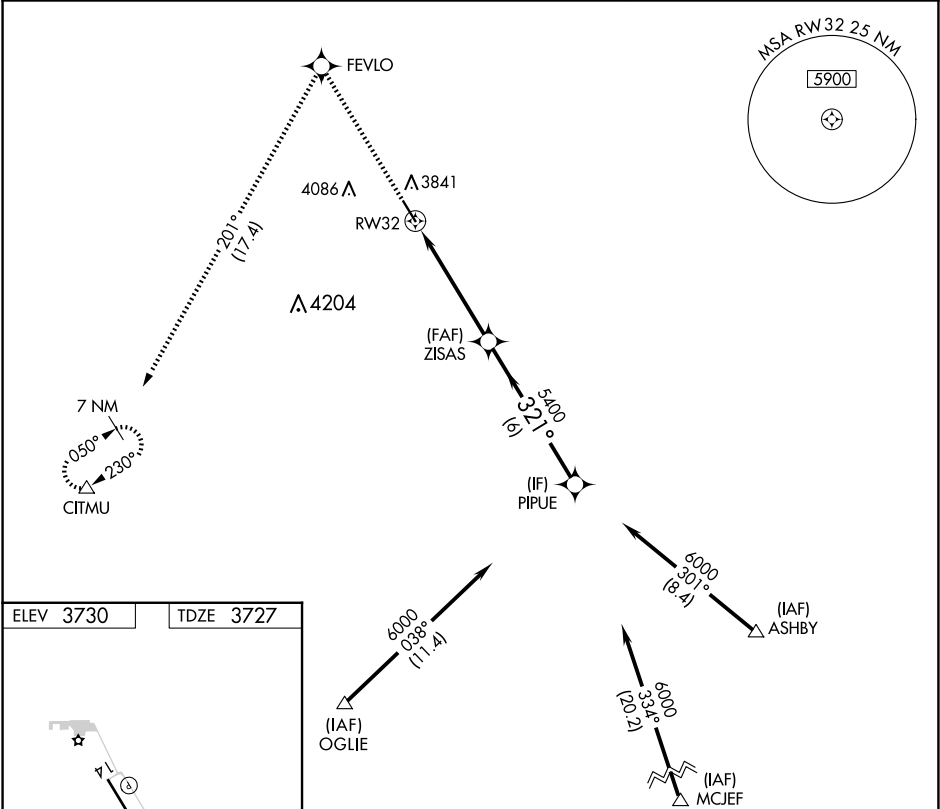
RNP APCH-GPS.

VDP NA when using Sidney Muni/Lloyd W. Carr Fld altimeter setting.

When local altimeter setting not received, use Sidney altimeter setting and increase all MDAs 200 feet and visibility Cat C/D ⅓ SM. Rwy 32 helicopter visibility reduction below ¼ SM NA.

MISSED APPROACH: Climb to 6500 direct FEVLO and on track 201° to CITMU and hold.

AWOS-3 <b>119.275</b>	DENVER CENTER <b>118.475 225.4</b>	UNICOM <b>122.7 (CTAF)</b>
--------------------------	---------------------------------------	-------------------------------



ELEV 3730 TDZE 3727

6500	FEVLO	tr 201°	CITMU	
				PIPUE
0.7 NM to RWY 32				
3.05° TCH 40				
0.7 NM 4.4 NM 6 NM				
CATEGORY	A	B	C	D
LNNAV MDA	4160-1 433 (500-1)			4160-1¼ 433 (500-1¼)