

APP CRS  
**141°**

Rwy Idg  
**5000**

TDZE  
**3730**

Apt Elev  
**3730**

RNAV (GPS) RWY 14

HOLYOKE (HEQ)

RNP APCH - GPS.

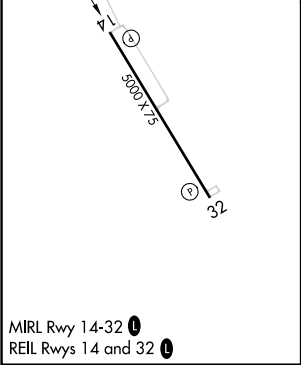
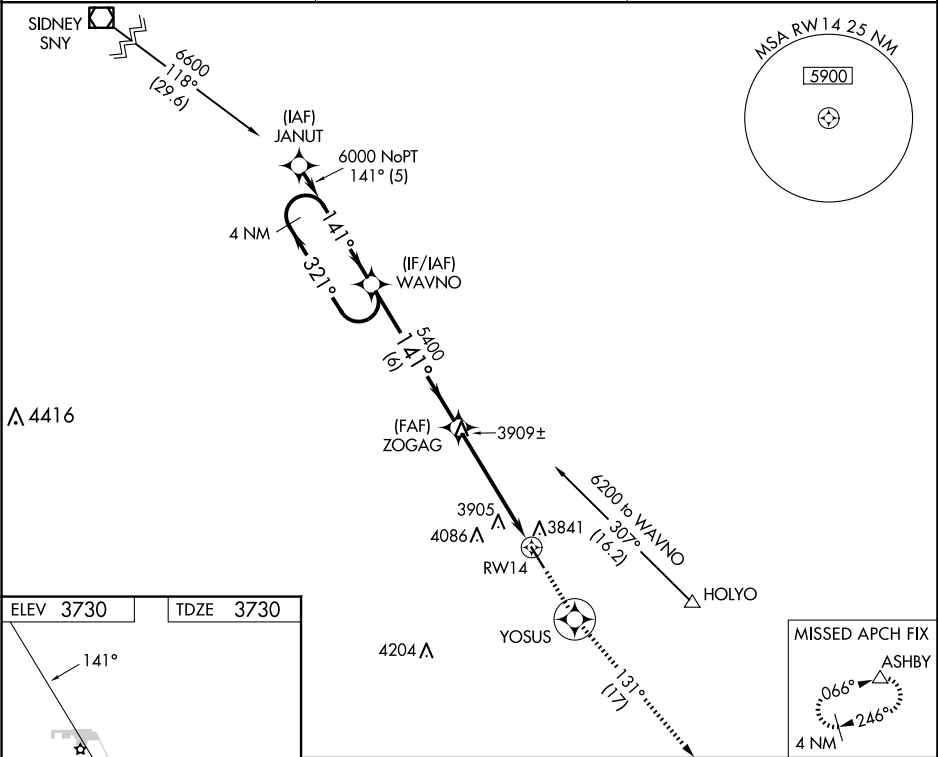
▼

NA

When local altimeter setting not received, use Sidney Muni/Lloyd W Carr Fld altimeter setting: increase all MDAs 200 feet and increase visibility LNAV Cats C and D ½ SM and Circling Cats C and D ¾ SM. VDP NA when using Sidney Muni/Lloyd W Carr Fld altimeter setting.

MISSED APPROACH: Climb to 6500 direct YOSUS and via 131° track to ASHBY and hold.

AWOS-3 <b>119.275</b>	DENVER CENTER <b>118.475 225.4</b>	UNICOM <b>122.7 (CTAF) 0</b>
--------------------------	---------------------------------------	---------------------------------



4 NM Holding Pattern		6500	YOSUS	ASHBY
WAVNO		↑	⊙	△
6000 ← 321°		ZOGAG	tr 131°	
141° →		5400	1.2 NM to RWY 14	
141°		3.04° TCH 40		
6 NM		3.8 NM	1.2	
CATEGORY	A	B	C	D
LNAV MDA	4160-1	430 (500-1)	4160-1 ¼ 430 (500-1 ¼)	
CIRCLING	4200-1 470 (500-1)	4240-1 510 (600-1)	4400-1 ¾ 670 (700-1 ¾)	4400-2 670 (700-2)