

WAAS CH 72936 W02A	APP CRS 016°	Rwy Idg 6250 TDZE 456 Apt Elev 458
--	------------------------	---

RNAV (GPS) RWY 2

AVI SUQUILLA (P2Ø)

RNP APCH - GPS.

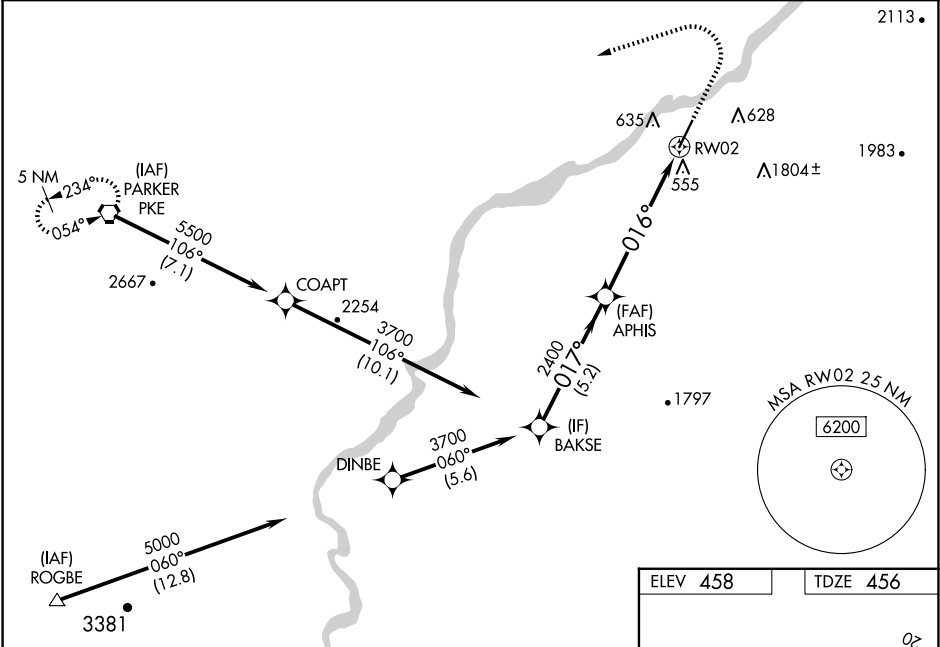
▼


Δ NA

For uncompensated Baro-VNAV systems, LNAV/VNAV NA below -1.5°C or above 54°C. Baro-VNAV and VDP NA when using Blythe altimeter setting. When local altimeter setting not received, use Blythe altimeter setting and increase LPV DA to 804 feet and all visibilities ¼ SM. Increase LNAV/VNAV DA to 1018 feet and all visibilities ¼ SM. Increase all MDAs 100 feet and LNAV visibility Cat B/C ¼ SM, and Circling visibility Cat B ¼ SM.

MISSED APPROACH: (Do not exceed 180K until PKE VORTAC) Climb to 1100, then climbing left turn to 5600 direct PKE VORTAC and hold, continue climb-in-hold to 5600.

AWOS-3PT 132.75	LOS ANGELES CENTER 128.15 285.6	UNICOM 122.725 (CTAF) Ø
---------------------------	---	-----------------------------------



BAKSE				1100 ↑		5600 ↷		PKE 	
3700		017°		2400		016°		1.9 NM to RW02	
GP 3.00° TCH 40		2400		2400		RW02			
5.2 NM		4.1 NM		1.9 NM					
CATEGORY		A		B		C		D	
LPV DA		706-¾		250 (300-¾)				NA	
LNAV/ VNAV DA		920-1⅓		464 (500-1⅓)				NA	
LNAV MDA		1100-1		644 (700-1)		1100-3 644 (700-3)		NA	
CIRCLING		1100-1		642 (700-1)		1580-3 1122 (1200-3)		NA	

