

WAAS CH 82533 W21A	APP CRS 219°	Rwy Idg TDZE 963 Apt Elev 963	4000
--	------------------------	---	-------------

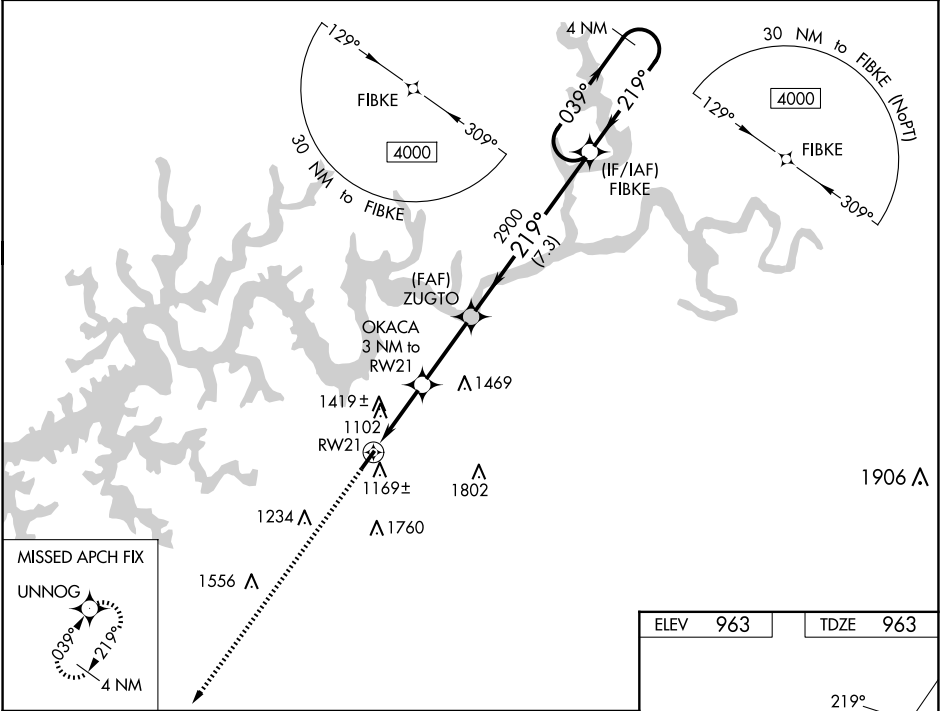
RNAV (GPS) RWY 21

WAYNE COUNTY (EKQ)

⚠ Baro-VNAV NA when using Somerset altimeter setting. For uncompensated Baro-VNAV systems, LNAV/VNAV NA below -16°C (4°F) or above 54°C (130°F). DME/DME RNP-0.3 NA. VDP NA with Somerset altimeter setting. Helicopter visibility reduction below ¾ SM NA. When local altimeter setting not received, use Somerset altimeter setting and increase all DA 44 feet, and all MDA 60 feet; increase LPV all Cats visibility ½ mile and LNAV/VNAV all Cats visibility ½ mile. Night landing: Rwy 3 NA.

MISSED APPROACH:
Climb to 4000 direct UNNOG and hold.

AWOS-3PT 118.825	INDIANAPOLIS CENTER 124.625 371.925	UNICOM 122.8 (CTAF) 0
----------------------------	---	---------------------------------



4000 UNNOG

*LNAV only.

RW21

1.8 NM to RW21

OKACA 3 NM to RW21

ZUGTO

FIBKE

2900

219°

039°

4000

1.8 NM

1.2 NM

3 NM

7.3 NM

1940*

2900

4000

GP 3.00°

TCH 40

CATEGORY	A	B	C	D
LPV DA	1257-1	294 (300-1)		NA
LNAV/VNAV DA	1666-2 ½	703 (800-2 ½)		NA
LNAV MDA	1580-1	617 (700-1)		NA
CIRCLING	1780-1 ¼ 817 (900-1 ¼)	1840-1 ¼ 877 (900-1 ¼)		NA

ELEV 963	TDZE 963
----------	----------

REIL Rwy 3

REIL Rwy 21 0

MIRL Rwy 3-21 0

MONTICELLO, KENTUCKY
Orig-B 28APR16

36°51'N-84°51'W

WAYNE COUNTY (EKQ)

RNAV (GPS) RWY 21