

APP CRS	Rwy Idg	4580
355°	TDZE	1458
	Apt Elev	1468

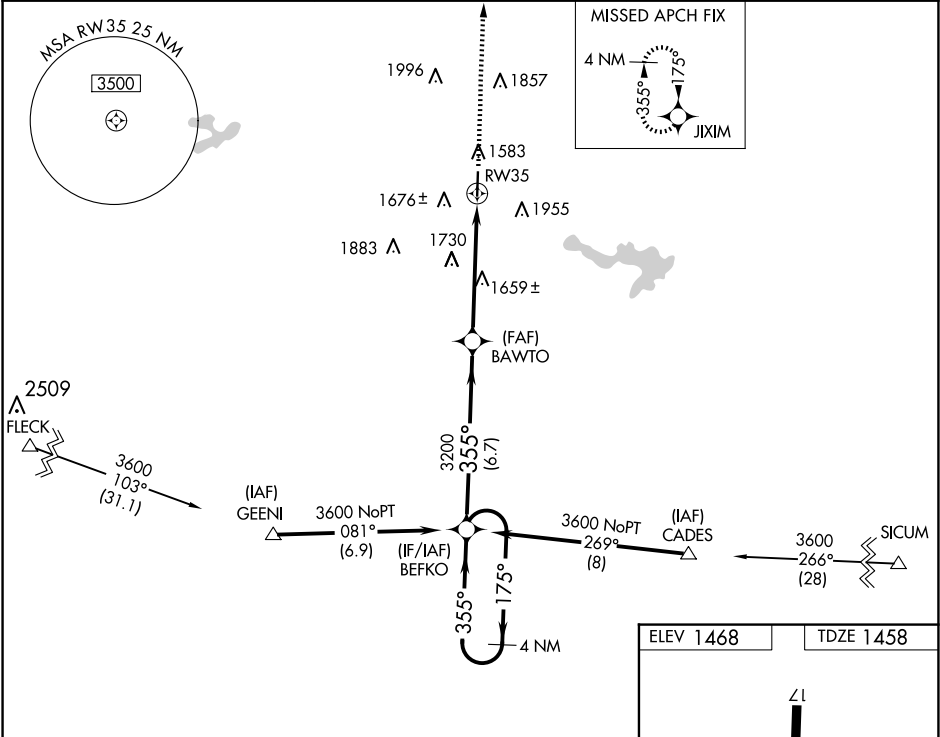
RNAV (GPS) RWY 35

EASTLAND MUNI (ETN)

⚠ For uncompensated Baro-VNAV systems, LNAV/VNAV NA below -22°C (-7°F) or above 54°C (130°F).  
DME/DME RNP-0.3 NA. When local altimeter setting not received, use Breckenridge altimeter setting: increase LNAV/VNAV DA to 1846 feet and all visibilities ½ SM; increase all MDAs 80 feet and LNAV and Circling visibility Cat C ¼ SM. Baro-VNAV NA when using Breckenridge altimeter setting. Circling Rwy 17 NA at night. Helicopter visibility reduction below ¾ SM NA.

MISSED APPROACH:  
Climb to 3600 direct JIXIM and hold.

AWOS-3PT 118.45	FORT WORTH CENTER 127.15 314.0	UNICOM 122.8 (CTAF) 0
--------------------	-----------------------------------	--------------------------



4 NM Holding Pattern			
BEFKO			
3600 ← 175° 355° →			
GP 3.00° TCH 45			
3200			
6.7 NM 5.3 NM			
CATEGORY	A	B	C
LNAV/ VNAV DA	1777-1 319 (400-1)		
LNAV MDA	1980-1	522 (600-1)	1980-1½ 522 (600-1½)
CIRCLING	2120-1 652 (700-1)	2320-1¼ 852 (900-1¼)	2320-2½ 852 (900-2½)

