

APP CRS
094°

Rwy Idg **2943**
TDZE **818**
Apt Elev **818**

RNAV (GPS) RWY 9

TWIN LAKES (8A7)

RNP APCH.

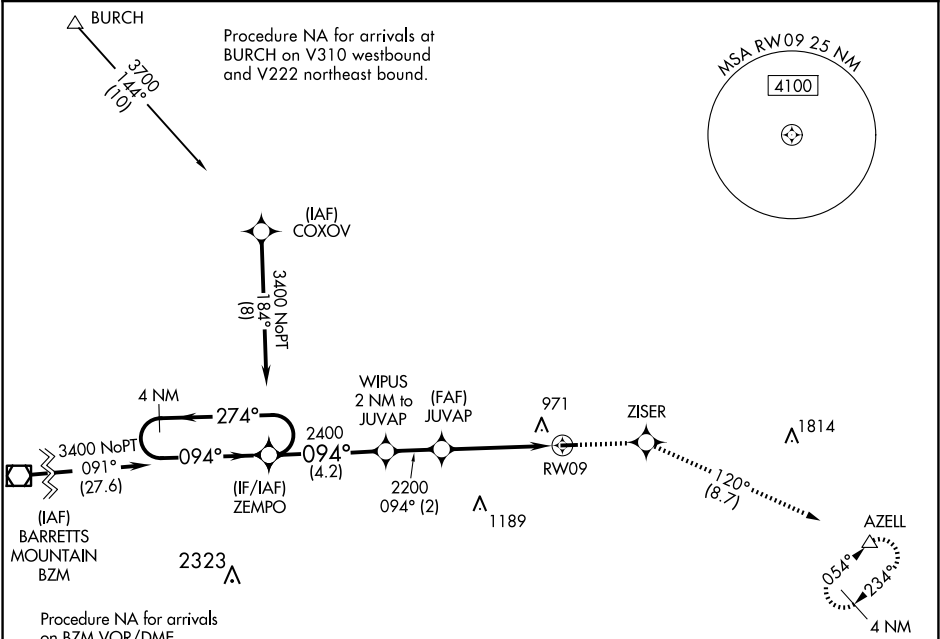
▽

NA

Use Davidson County Exec altimeter setting; when not received, use Smith Reynolds altimeter setting and increase all MDA 40 feet. Procedure NA at night.
Rwy 9 helicopter visibility reduction below 1 SM NA.

MISSED APPROACH: Climb to 3000 direct ZISER and on track 120° to AZELL and hold.

EXX AWOS-3 119.825	GREENSBORO APP CON 124.35 269.225	UNICOM 122.7 (CTAF)
------------------------------	---	-------------------------------



ELEV 818

TDZE 818

4 NM Holding Pattern

Visual Segment - Obstacles.

3000

ZISER

tr 120°

AZELL

3400

274°

094°

094°

2400

2200

4.2 NM

2 NM

4.3 NM

RWY09

CATEGORY	A	B	C	D
LNVA MDA	1320-1	502 (600-1)	NA	NA
CIRCLING	1380-1 562 (600-1)	1400-1 582 (600-1)	NA	NA

1.5% UP

2943 X 50

094°

27

IIRL Rwy 9-27

SE-2, 07 AUG 2025 to 04 SEP 2025

SE-2, 07 AUG 2025 to 04 SEP 2025