

APP CRS	Rwy Idg	2758
071°	TDZE	193
	Apt Elev	193

RNAV (GPS) RWY 7

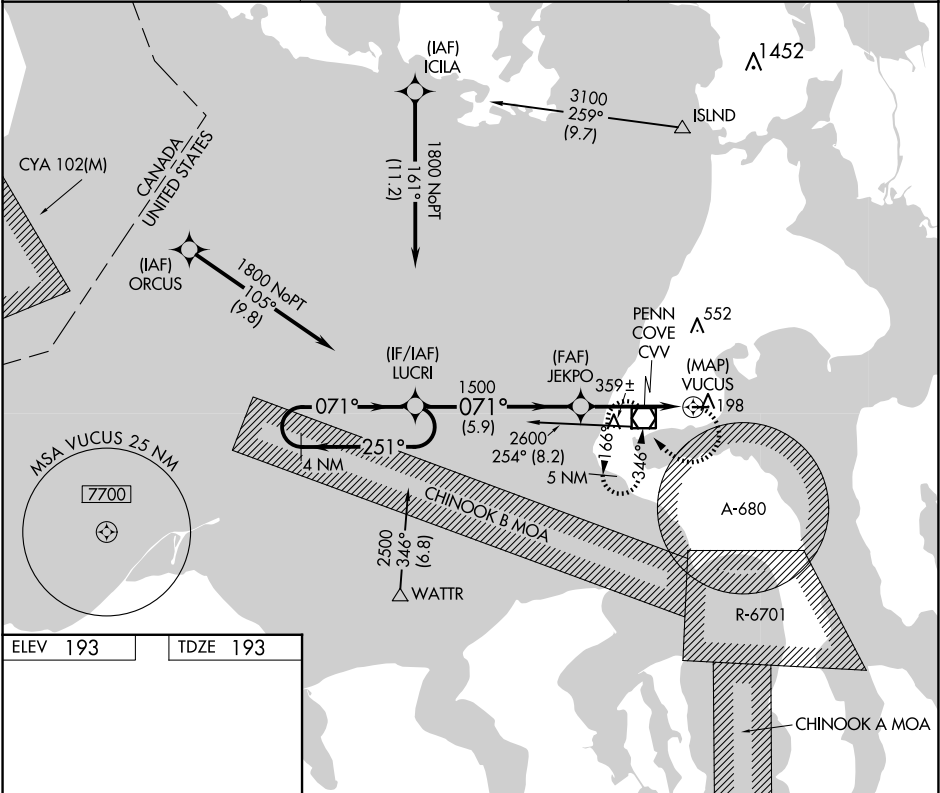
DELAURENTIS (OKH)

⚠

DME/DME RNP- 0.3 NA. Helicopter visibility reduction below ¾ SM NA. Circling north of Rwy 7-25 NA at night. When local altimeter setting not received, use Whidbey Island NAS (Autl Fld) altimeter setting and increase all MDAs 40 feet. Night landing: Rwy 25 NA.

MISSED APPROACH: Climbing right turn to 3400 direct CVV VOR/DME and hold, continue climb-in-hold to 3400.

AWOS-3 132.775	WHIDBEY APP CON 118.2 285.65	UNICOM 122.8 (CTAF) 0
-------------------	---------------------------------	--------------------------



ELEV 193

TDZE 193

071°

3265 X 25

1.6% UP

071°

LIRL Rwy 7-25 0

4 NM Holding Pattern

Descent Angle NA.

3400 CVV

1800

251°

071°

071°

1500

VUCUS

5.9 NM

4 NM

0.1

CATEGORY	A	B	C	D
LNAV MDA	620-1	427 (500-1)	NA	
CIRCLING	620-1	660-1	NA	
	427 (500-1)	467 (500-1)		