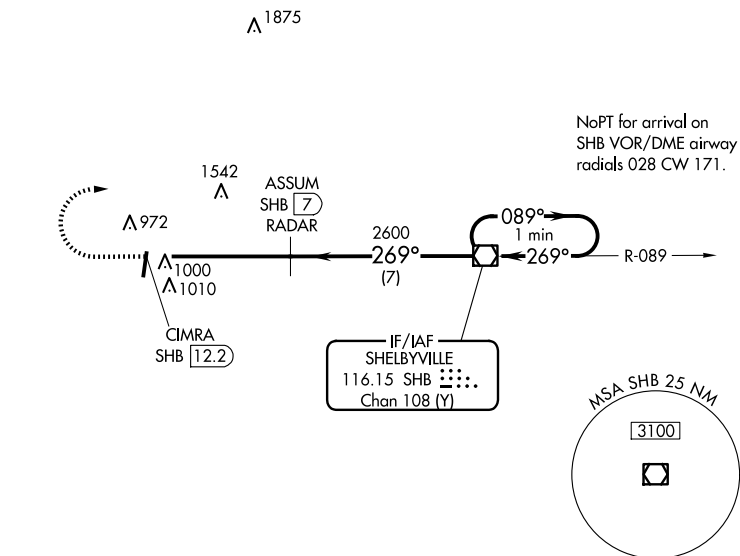
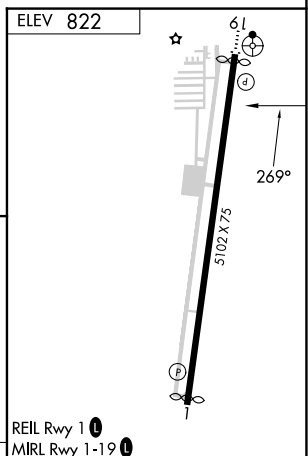
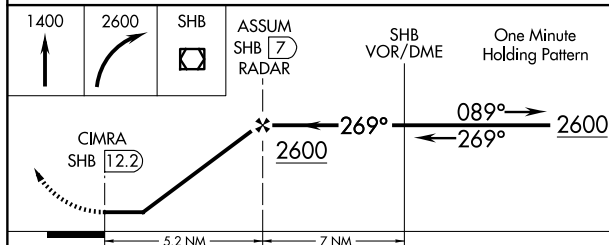


VOR-A  
INDY SOUTH GREENWOOD (HFY)

**MISSED APPROACH:** Climb to 1400 then climbing right turn to 2600 direct SHB VOR/DME and hold.

AWOS-3P <b>118,525</b>	INDIANAPOLIS APP CON <b>124.95 317.8</b>	GCO <b>121.725</b>	UNICOM <b>123.0 (CTAF) 0</b>
---------------------------	---	-----------------------	---------------------------------

2002  $\Delta$ 

CATEGORY	A	B	C	D	FAF to MAP 5.2 NM					
CIRCLING	1360-1 538 (600-1)	1380-1 558 (600-1)	1380-1½ 558 (600-1½)	NA	Knots	60	90	120	150	180
					Min:Sec	5:12	3:28	2:36	2:05	1:44