


WAAS
CH **97640**
W01A

APP CRS
010°

Rwy Ldg
TDZE **822**
Apt Elev **822**

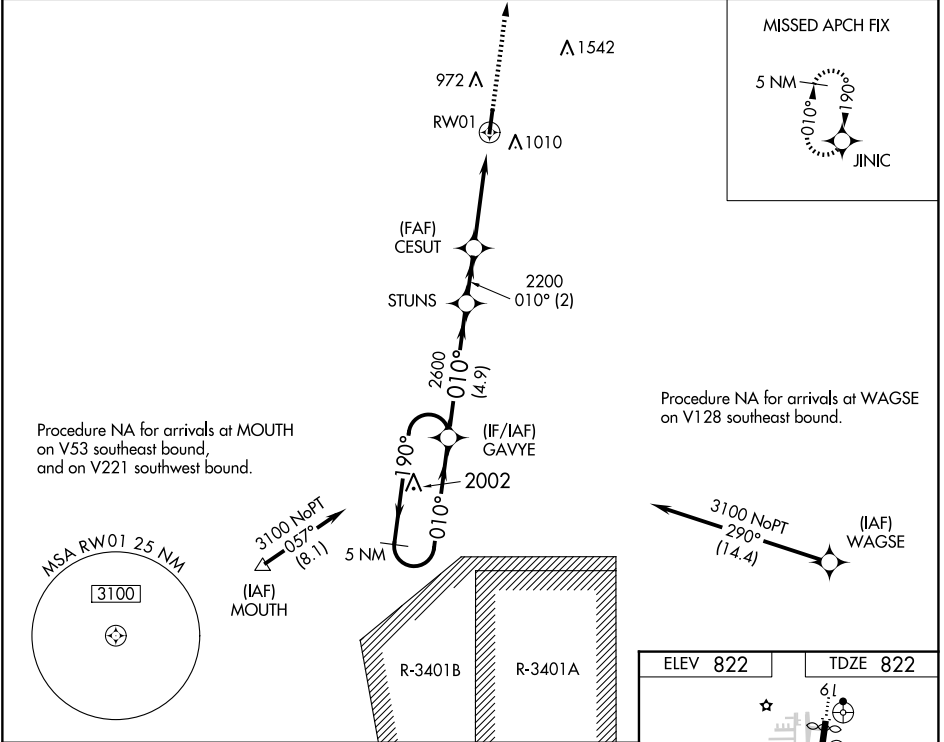
RNAV (GPS) RWY 1
INDY SOUTH GREENWOOD (HF'Y)



For uncompensated Baro-VNAV systems, LNAV/VNAV NA below -16°C (4°F) or above 54°C (130°F). Rwy 1 helicopter visibility reduction below ¾ SM NA. DME/DME RNP-0.3 NA.

MISSED APPROACH: Climb to 3000 direct JINIC and hold.

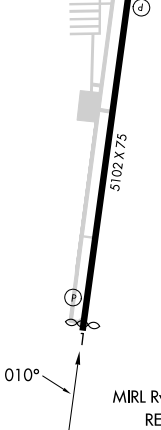
AWOS-3P 118.525	INDIANAPOLIS APP CON 124.95 317.8	GCO 121.725	UNICOM 123.0 (CTAF) 
---------------------------	---	-----------------------	---



5 NM Holding Pattern		VGSI and RNAV glidepath not coincident (VGSI Angle 3.00/TCH 39).		3000	JINIC
3100 ← 190° 010° →		STUNS		CESUT	
GP 3.00° TCH 39		2600		2200	
		4.9 NM		2 NM	
				2.9 NM	
				1.3 NM	
CATEGORY	A	B	C	D	
LPV DA	1167-1½		345 (400-1½)		
LNAV/ VNAV DA	1152-1½		330 (400-1½)		
LNAV MDA	1280-1	458 (500-1)	1280-1¾	458 (500-1¾)	
CIRCLING	1320-1 498 (500-1)	1380-1 558 (600-1)	1380-1½ 558 (600-1½)	1900-3 1078 (1100-3)	


ELEV 822

TDZE 822



5102 X 75

010°

MIRL Rwy 1-19 

REIL Rwy 1 