

WAAS CH 69408 W34A	APP CRS 342°	Rwy Idg TDZE Apt Elev	5498 299 300
--	------------------------	-----------------------------	---

APP CRS
342°

Rwy Idg	5498
TDZE	299
Apt Elev	300

RNAV (GPS) RWY 34

ANSON COUNTY/JEFF CLOUD FLD (AFP)

RNP APCH - GPS.	
-----------------	--



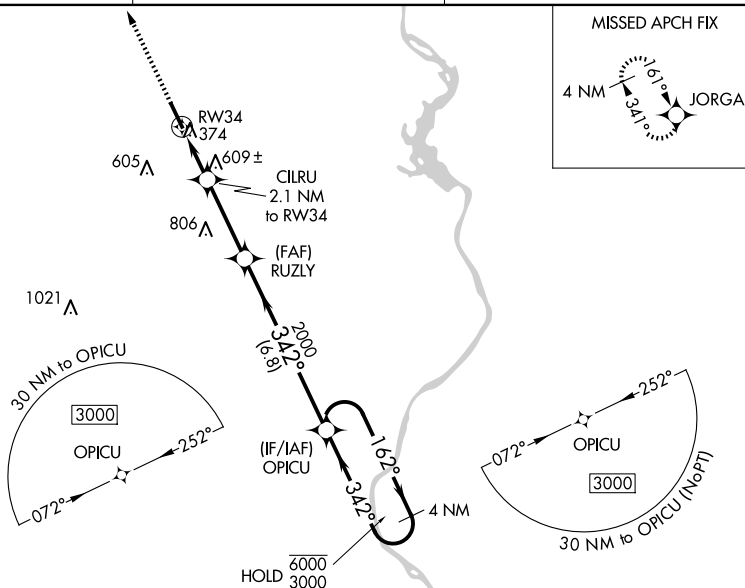
For uncompensated Baro-VNAV systems, procedure NA below -15°C or above 42°C. Rwy 34 helicopter visibility reduction below $\frac{3}{4}$ SM NA.

MISSED APPROACH: Climb to 3000 direct JORGA and hold.

AWOS-3
119.325

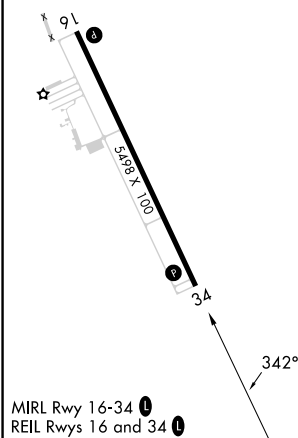
CHARLOTTE APP CON
120.05 307.8

UNICOM
122.8 (CTAF) **L**



ELEV 300

TDZE 299



JORGA

4 NM Holding Pattern

RW34

CILRU
2.1 NM to RW34

RUZLY
2000

OPICU

GP 3.00°
TCH 42'

Distances:
2.1 NM
3.1 NM
6.8 NM

Angles:
162°
342°

Elevations:
1000
2000
3000

CATEGORY	A	B	C	D
LPV DA	649-1		350 (400-1)	
RNAV/VNAV DA	957-1½		658 (700-1½)	
RNAV MDA	860-1	561 (600-1)	860-1½	561 (600-1½)
CIRCLING	860-1	560 (600-1)	1080-2¼ 780 (800-2¼)	1080-2½ 780 (800-2½)

WADESBORO, NORTH CAROLINA

Amdt 2D 03NOV22

ANSON COUNTY/JEFF CLOUD FLD (AFP)

35°01'N-80°05'W

RNAV (GPS) RWY 34

SE-2, 07 AUG 2025 to 04 SEP 2025