

APP CRS
162°

Rwy Idg
TDZE
300

Apt Elev
300

RNAV (GPS) RWY 16

ANSON COUNTY/JEFF CLOUD FLD (A/F P)

RNP APCH - GPS.

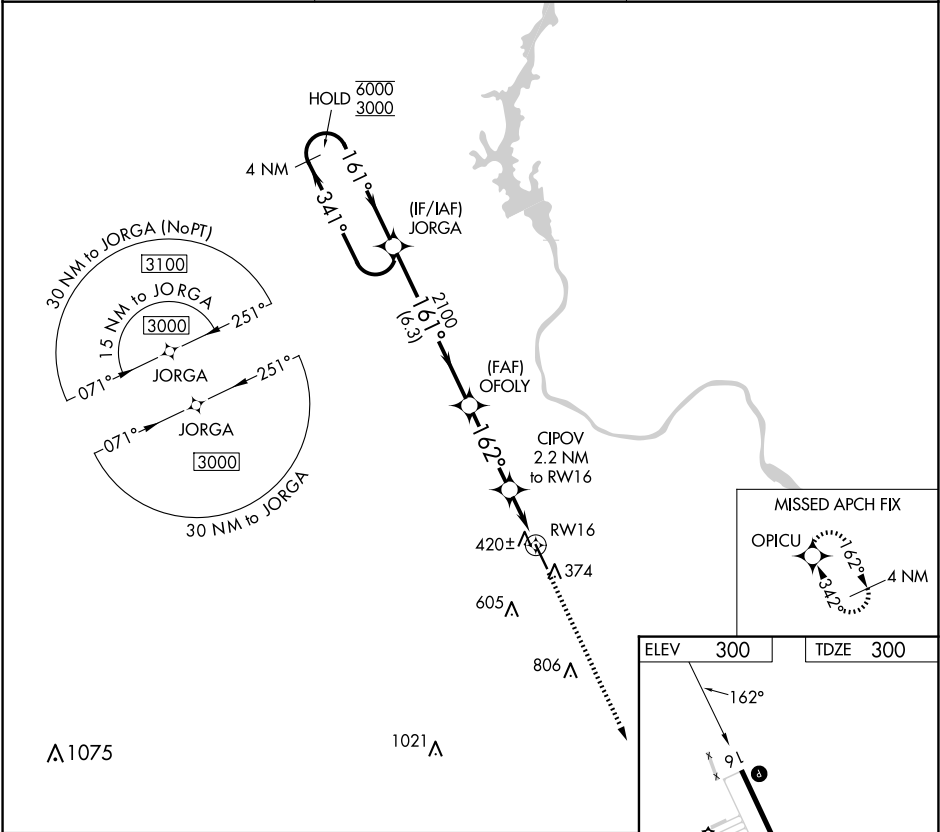
▼

▲

Procedure NA at night.
Rwy 16 helicopter visibility reduction below 1 SM NA.

MISSED APPROACH: Climb to 3000 direct OPICU and hold.

AWOS-3 119.325	CHARLOTTE APP CON 120.05 307.8	UNICOM 122.8 (CTAF) 0
--------------------------	--	---------------------------------



4 NM Holding Pattern

VGSI and descent angles not coincident (VGSI Angle 3.00/TCH 44).

3000 OPICU

JORGA

OFOLY

CIPOV 2.2 NM to RW16

RW16

6000 3000 341° 161° 161° 2100 162° 1040

6.3 NM 3.3 NM 2.2 NM

CATEGORY	A	B	C	D
LNAV MDA	680-1 380 (400-1)			

ELEV 300 TDZE 300

162° 91° 34° 5498 X 100

MIRL Rwy 16-34 0
REIL Rwy 16 and 34 0

SE-2, 07 AUG 2025 to 04 SEP 2025

SE-2, 07 AUG 2025 to 04 SEP 2025