

LOC/DME I-AFP	APP CRS	Rwy Idg	5498
108.55	342°	TDZE	299
Chan 22(Y)		Apt Elev	300

ILS or LOC RWY 34

ANSON COUNTY/JEFF CLOUD FLD (AFP)

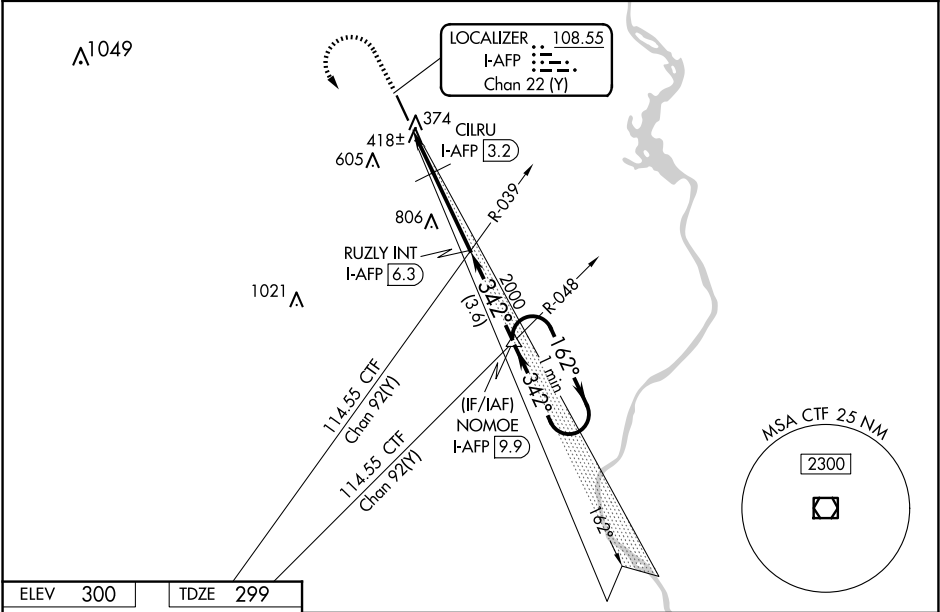
⚠

⚠

Rwy 34 helicopter visibility reduction below ¾ SM NA.

MISSED APPROACH: Climb to 1000 then climbing left turn to 3000 on heading 120° and on I-AFP S course (162°) to NOMOE INT/I-AFP 9.9 DME and hold.

AWOS-3 119.325	CHARLOTTE APP CON 120.05 307.8	UNICOM 122.8 (CTAF) 0
-------------------	-----------------------------------	--------------------------



<p>MRL Rwy 16-34 REIL Rwys 16 and 34</p> <p>FAF to MAP 5.2 NM</p> <table><tr><td>Knots</td><td>60</td><td>90</td><td>120</td><td>150</td><td>180</td></tr><tr><td>Min:Sec</td><td>5:12</td><td>3:28</td><td>2:36</td><td>2:05</td><td>1:44</td></tr></table>	Knots	60	90	120	150	180	Min:Sec	5:12	3:28	2:36	2:05	1:44	<table><tr><td>1000</td><td>3000</td><td>I-AFP S crs</td><td>NOMOE</td></tr><tr><td>↑</td><td>hdg 120°</td><td></td><td>△</td></tr></table> <p>RUZLY INT I-AFP 6.3</p> <p>NOMOE I-AFP 9.9</p> <p>One Minute Holding Pattern</p> <p>162° → 3000</p> <p>← 342°</p> <p>342°</p> <p>2000</p> <p>2000</p> <p>940</p> <p>1.1 1 NM 3.1 NM 3.6 NM</p> <p>GS 3.00° TCH 42</p> <table><tr><td>CATEGORY</td><td>A</td><td>B</td><td>C</td><td>D</td></tr><tr><td>S-ILS 34</td><td colspan="4">649-1 350 (400-1)</td></tr><tr><td>S-LOC 34</td><td colspan="2">940-1 641 (700-1)</td><td colspan="2">940-1½ 641 (700-1½)</td></tr><tr><td colspan="5">CILRU FIX MINIMUMS</td></tr><tr><td>S-LOC 34</td><td colspan="2">820-1 521 (600-1)</td><td colspan="2">820-1½ 521 (600-1½)</td></tr></table>	1000	3000	I-AFP S crs	NOMOE	↑	hdg 120°		△	CATEGORY	A	B	C	D	S-ILS 34	649-1 350 (400-1)				S-LOC 34	940-1 641 (700-1)		940-1½ 641 (700-1½)		CILRU FIX MINIMUMS					S-LOC 34	820-1 521 (600-1)		820-1½ 521 (600-1½)	
	Knots	60	90	120	150	180																																								
	Min:Sec	5:12	3:28	2:36	2:05	1:44																																								
	1000	3000	I-AFP S crs	NOMOE																																										
	↑	hdg 120°		△																																										
CATEGORY	A	B	C	D																																										
S-ILS 34	649-1 350 (400-1)																																													
S-LOC 34	940-1 641 (700-1)		940-1½ 641 (700-1½)																																											
CILRU FIX MINIMUMS																																														
S-LOC 34	820-1 521 (600-1)		820-1½ 521 (600-1½)																																											

SE-2, 07 AUG 2025 to 04 SEP 2025

SE-2, 07 AUG 2025 to 04 SEP 2025